

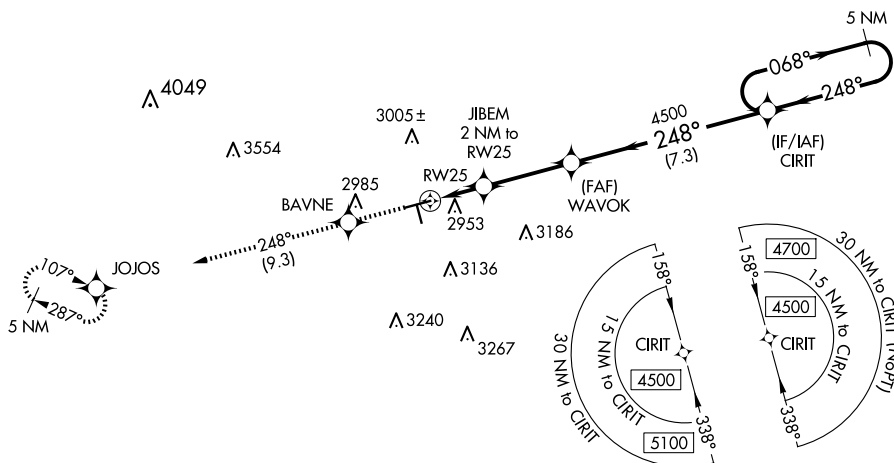
| | | |
|--|------------------------|---|
| WAAS CH 72923 W25A | APP CRS 248° | Rwy Idg 5571 TDZE 2800 Apt Elev 2805 |
|--|------------------------|---|

RNAV (GPS) RWY 25

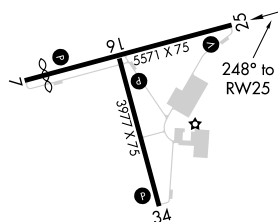
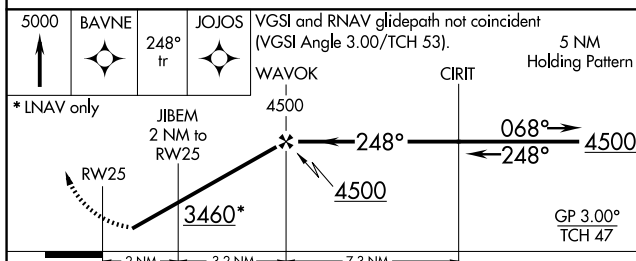
- ⚠** For uncompensated Baro-VNAV systems, LNAV/VNAV NA below -20°C (-4°F) or above 26°C (78°F). When local altimeter setting not received, use Midland Intl Air and Space Port altimeter setting and increase LPV DA to 3109 and LNAV/VNAV DA to 3172 and all MDA 40 feet, increase LNAV/VNAV all Cats, LNAV Cats C/D and Circling Cat C visibility ¼ SM. When VGSI inop, Straight-in/Circling Rwy 25 procedure NA at night. DME/DME RNP-0.3 NA. Helicopter visibility reduction below 1 SM NA.

MISSED APPROACH: Climb to 5000
direct BAVNE and on 248° track to
JOJOS and hold.

| | | | |
|--------------------------|---|--------------------------|--|
| AWOS-3 118.125 | MIDLAND APP CON ★ 124.6 290.4 | CLNC DEL 121.8 | UNICOM 122.7 (CTAF) 0 |
|--------------------------|---|--------------------------|--|



| | | | | |
|------|------|----------|------|------|
| ELEV | 2805 | D | TDZE | 2800 |
|------|------|----------|------|------|



| CATEGORY | | A | | B | | C | | D | |
|---------------|-----|----------------------------|-------------|-------------------------------|--|-----------------------|--|---|--|
| LPV | DA | 3081-1 281 (300-1) | | | | | | | |
| LNAV/ VNAV | DA | 3144-1 1/8 344 (400-1 1/8) | | | | | | | |
| LNAV | MDA | 3220-1 | 420 (500-1) | 3220-1 1/4 | | 420 (500-1 1/4) | | | |
| CIRCLING | | 3320-1 | 515 (600-1) | 3440-1 3/4 635 (700-1 3/4) | | 3700-3 895 (900-3) | | | |

MIRL Rwy 7-25 and 16-34 **L**