

WAAS CH 93920 W31A	APP CRS 308°	Rwy Idg TDZE 1123 Apt Elev 1123	4010
--	------------------------	---	-------------

RNAV (GPS) RWY 31

LITTLE FALLS/MORRISON COUNTY-LINDBERGH FLD (LXL)

RNP APCH.

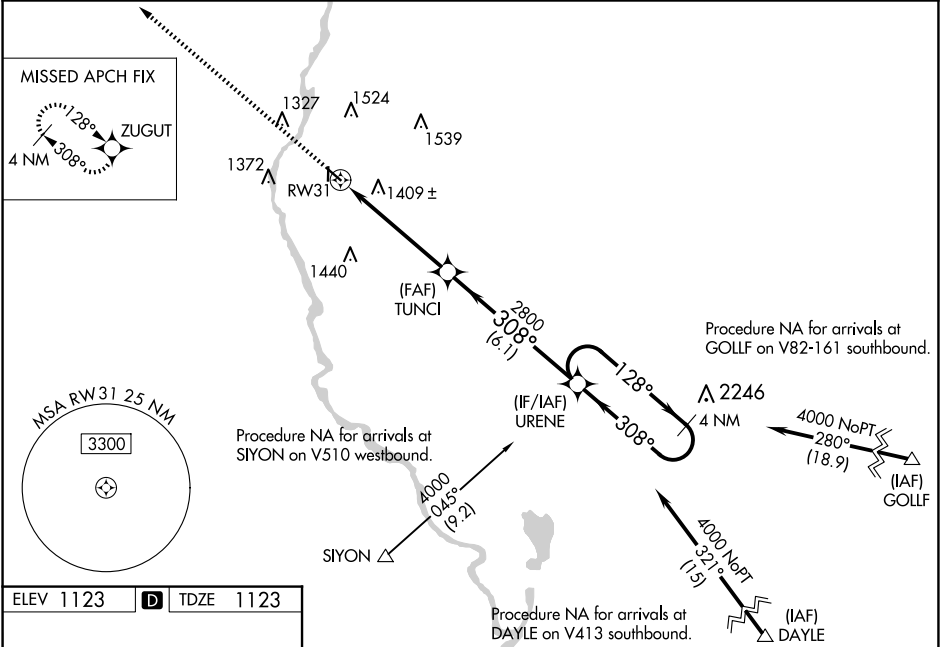
▼

▲

Baro-VNAV NA when using St Cloud altimeter setting. For uncompensated Baro-VNAV systems, LNAV/VNAV NA below -17°C or above 32°C. Rwy 31 visibility reduction below ¾ SM by helicopters NA. When local altimeter setting not received, use St. Cloud altimeter setting and increase all DAs 76 feet and all MDAs 80 feet; increase LPV all Cats visibility ½ SM and LNAV/VNAV all Cats, LNAV Cat C/D and Circling Cat C/D visibility ¼ SM. Circling Rwy 18, 36 NA.

MISSED APPROACH:
Climb to 3000 direct ZUGUT and hold.

AWOS-3 119.45	MINNEAPOLIS CENTER 118.05 239.0	GCO 121.725	UNICOM 122.8 (CTAF) 0
-------------------------	---	-----------------------	---------------------------------



3000
↑
ZUGUT

VGSI and RNAV glidepath not coincident (VGSI Angle 3.00/TCH 25).

4 NM
Holding Pattern

81
2858 X 60
36
4010 X 75
308° to RW31

TUNCI
2800
RW31
2800
308°
5.1 NM
6.1 NM
URENE
128°
4000
308°
GP 3.00°
TCH 45

CATEGORY	A	B	C	D
LPV DA	1517-1⅓		394 (400-1⅓)	
LNAV/VNAV DA	1749-2¼		626 (700-2¼)	
LNAV MDA	1660-1	537 (600-1)	1660-1½	537 (600-1½)
CIRCLING	1700-1 577 (600-1)	1800-1 677 (700-1)	1840-2 717 (800-2)	2000-2¾ 877 (900-2¾)

NC-1, 07 AUG 2025 to 04 SEP 2025

NC-1, 07 AUG 2025 to 04 SEP 2025