

FAIRMONT, WEST VIRGINIA

AL-6154 (FAA)

23110

APP CRS
2269

Rwy Idg	2965
TDZE	1032
Apt Elev	1032

RNAV (GPS) RWY 23
FAIRMONT MUNI-FRANKMAN FLD (4G7)

RNP APCH.



Procedure NA at night.
Rwy 23 helicopter visibility reduction below 1 SM NA.

MISSED APPROACH: Climbing right turn to 4000 direct TEDDS and hold.

CKB ASOS-3

127.825

CLARKSBURG APP CON★

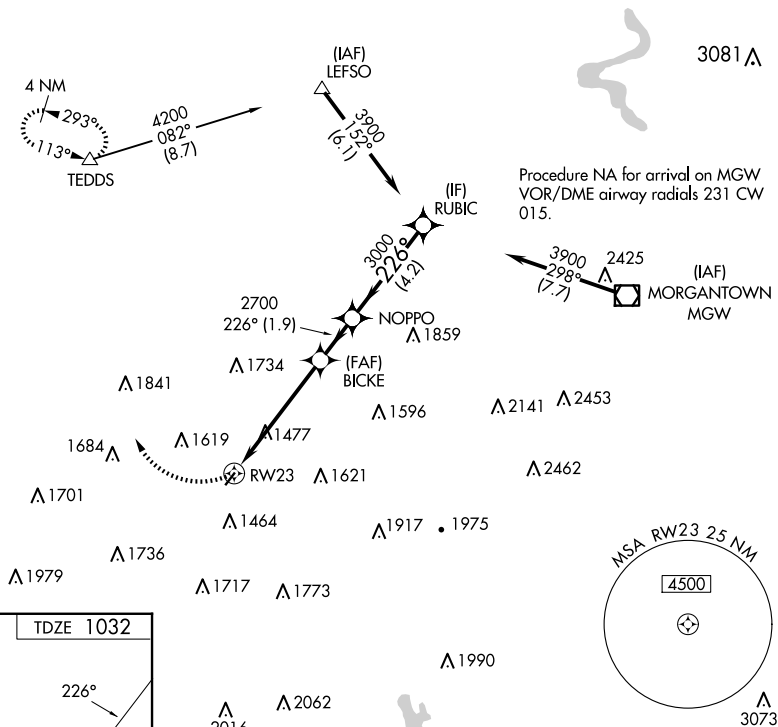
121,15 284,65

CLNC DEL

118.35

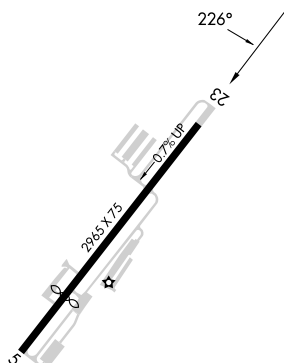
UN|COM

122.8 (CTAF) L



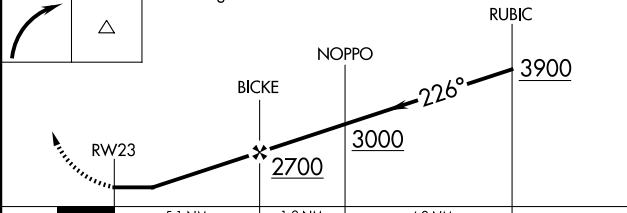
ELEV 1032


TDZE 1032



REIL Rwy 23 **L**
MIRL Rwy 5-23 **L**

4000	TEDDS	Visual Segment - Obstacles.
------	-------	-----------------------------



	5.1 NM	1.9 NM	4.2 NM	
CATEGORY	A	B	C	D
INAV MDA	1840-1 808 (900-1)	1840-1¼ 808 (900-1¼)	1840-2½ 808 (900-2½)	NA
 CIRCLING	1840-1 808 (900-1)	1840-1¼ 808 (900-1¼)	2020-3 988 (1000-3)	NA

FAIRMONT, WEST VIRGINIA

Amdt 2 05DEC19

FAIRMONT MUNI-FRANKMAN FLD (4G7)

39°27'N-80°10'W

RNAV (GPS) RWY 23

NE-4, 07 AUG 2025 to 04 SEP 2025