

WAAS CH 82235 W36A	APP CRS 001°	Rwy Ldg 5000 TDZE 804 Apt Elev 823
--	------------------------	---

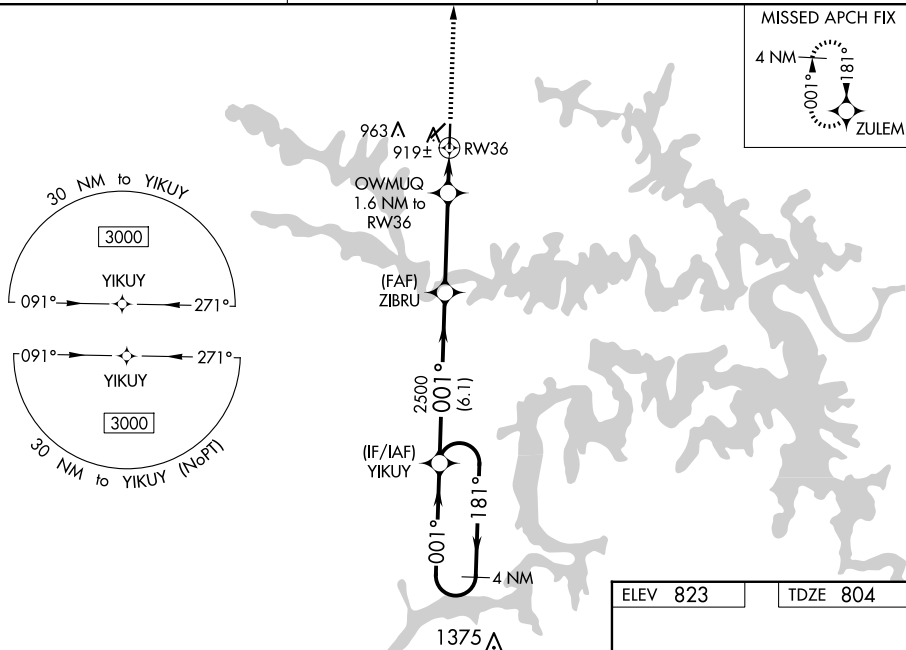
RNAV (GPS) RWY 36
CLINTON RGNL (GLY)

RNP APCH.

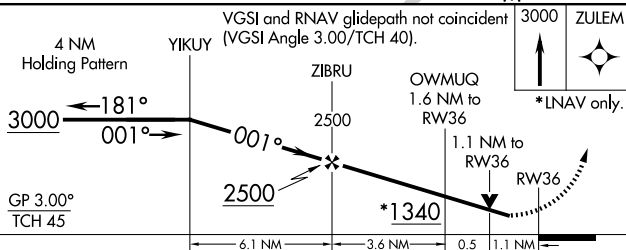
T Baro-VNAV NA when using Whiteman AFB altimeter setting. For uncompensated Baro-VNAV systems, LNAV/VNAV NA below -16°C or above 54°C. Circling Rwy 4 NA at night. When local altimeter setting not received, use Whiteman AFB altimeter setting and increase all DA 61 feet and all MDA 80 feet, increase visibility LNAV Cts C/D ¾ mile, LNAV/VNAV all Cts and Circling Cat D ¼ mile. VDP NA with Whiteman AFB altimeter setting.


MISSED APPROACH:
Climb to 3000 direct
ZULEM and hold.

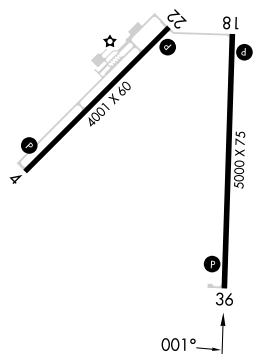
AWOS-3PT 120.475	WHITEMAN APP CON ★ 127.45	UNICOM 122.8 (CTAF) 0
----------------------------	-------------------------------------	--



ELEV 823	TDZE 804
----------	----------



CATEGORY		A	B	C	D
LPV	DA	1054-1 250 (300-1)			
RNAV/ VNAV	DA	1101-1 297 (300-1)			
RNAV	MDA	1260-1 456 (500-1)		1260-1 $\frac{3}{8}$ 456 (500-1 $\frac{3}{8}$)	
 CIRCLING		1280-1 457 (500-1)	1300-1 477 (500-1)	1340-1 $\frac{1}{2}$ 517 (600-1 $\frac{1}{2}$)	1480-2 657 (700-2)



MIRL Rwy 4-22 and 18-36 **L**
REIL Rwy 4, 18, 22 and 36 **L**