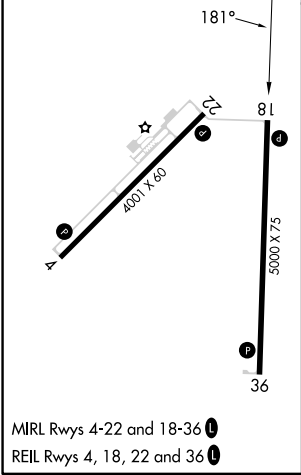
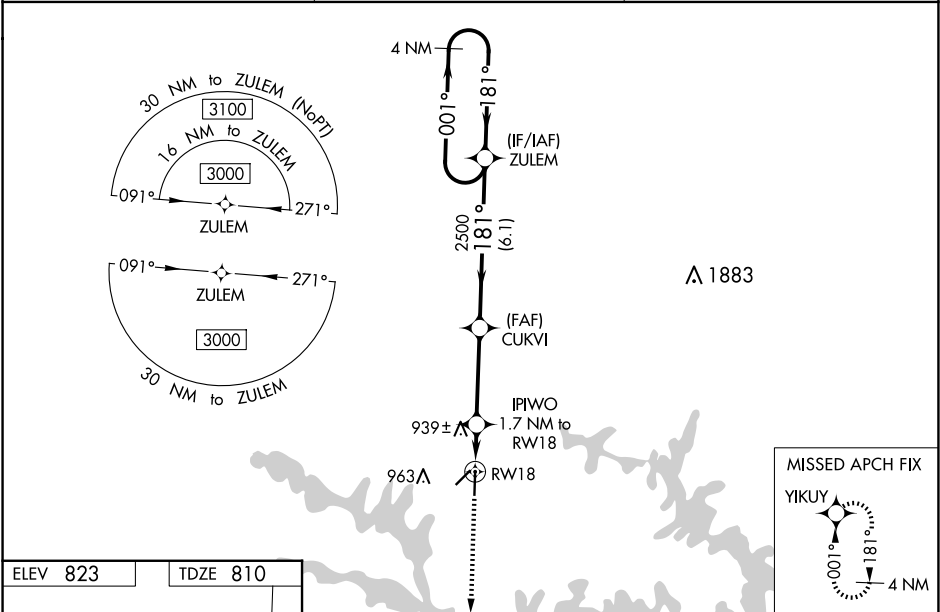


WAAS CH 65637 W18A	APP CRS 181°	Rwy Ldg TDZE Apt Elev	5000 810 823
--	------------------------	-----------------------------	---

RNAV (GPS) RWY 18
CLINTON RGNL (GLY)

RNP APCH. <div>▼ Baro-VNAV NA when using Whiteman AFB altimeter setting. For uncompensated Baro-VNAV systems, LNAV/VNAV NA below -16°C or above 54°C. Circling Rwy 4 NA at night. When local altimeter setting not received, use Whiteman AFB altimeter setting and increase all DA 61 feet and all MDA 80 feet, visibility LNAV Cat C/D ¾ mile, Circling Cat D ¼ mile. Rwy 18 helicopter visibility reduction below ¾ SM NA. VDP NA when using Whiteman AFB altimeter setting.</div> <div>⚠ MISSED APPROACH: Climb to 3000 direct YIKUY and hold.</div>		AWOS-3PT 120.475	WHITEMAN APP CON ★ 127.45	UNICOM 122.8 (CTAF) 0
---	--	----------------------------	-------------------------------------	--



ELEV 823 TDZE 810		3000 YIKUY		VGSI and RNAV glidepath not coincident (VGSI Angle 3.00/TCH 39).	
*LNAV only.		IPIWO 1.7 NM to RW18		ZULEM 4 NM Holding Pattern	
RW18 1.1 NM to RW18		CUKVI 2500		001° → 3000	
1380*		2500		GP 3.00° TCH 45	
1.1 NM 0.6 3.5 NM 6.1 NM					
CATEGORY	A	B	C	D	
LPV DA	1060-1 250 (300-1)				
LNAV/VNAV DA	1060-1 250 (300-1)				
LNAV MDA	1200-1 390 (400-1)				
CIRCLING	1280-1 457 (500-1)	1300-1 477 (500-1)	1340-1½ 517 (600-1½)	1480-2 657 (700-2)	