

WAAS CH 48900 W01A	APP CRS 005°	Rwy Idg TDZE 228 Apt Elev 228
--	------------------------	---

RNAV (GPS) RWY 1

FRANKLIN COUNTY STATE (F'SO)

RNP APCH-GPS.

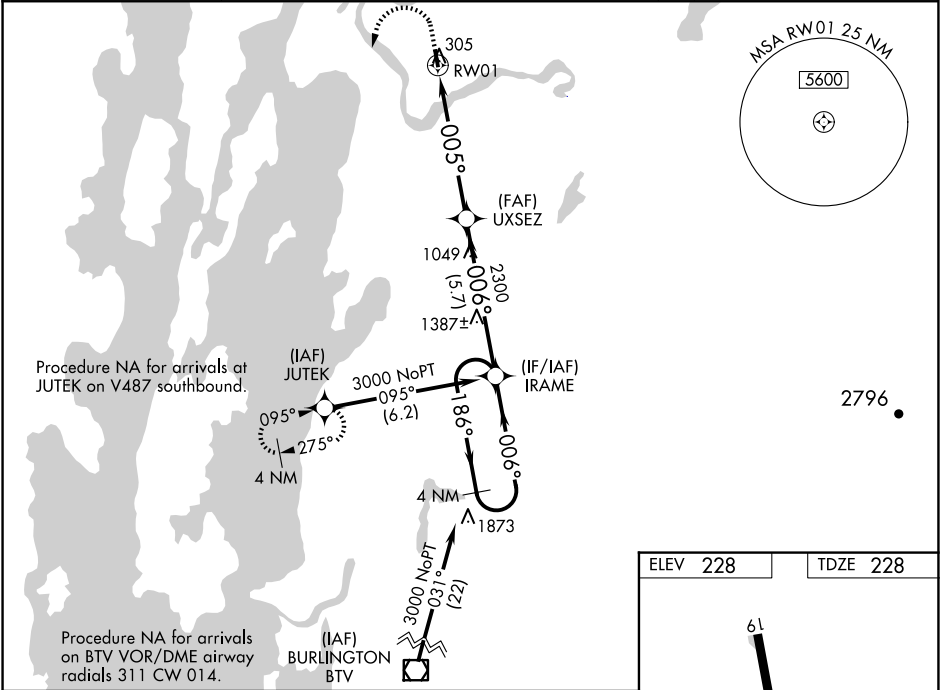
▼

▲

For uncompensated Baro-VNAV systems, LNAV/VNAV NA below -15°C or above 54°C.
Rwy 1 helicopter visibility reduction below 1 SM NA.
Procedure NA at night.

MISSED APPROACH: Climb to 1100 then climbing left turn to 3000 direct JUTEK and hold.

AWOS-3 119.025	BURLINGTON APP CON ★ (EAST) 278.8 (WEST) 360.8	UNICOM 122.8 (CTAF) 0
--------------------------	--	--



4 NM Holding Pattern

IRAME

GP 3.40° TCH 59

3000 ← 186° 006° → 006° 2300 005° RW01

5.7 NM 5.6 NM

1100 3000 JUTEK

VGSI and RNAV glidepath angle not coincident (VGSI Angle 4.00/TCH 40).

CATEGORY	A	B	C	D
LPV DA	512-1	284 (300-1)		NA
LNAV/VNAV DA	1024-2½	796 (800-2½)		NA
LNAV MDA	920-1	692 (700-1)		NA
CIRCLING	920-1 692 (700-1)	960-1 732 (800-1)		NA

ELEV 228 TDZE 228

61

3001 x 60

005°

MIRL Rwy 1-19 0

REIL Rws 1 and 19 0

NE-1, 07 AUG 2025 to 04 SEP 2025

NE-1, 07 AUG 2025 to 04 SEP 2025