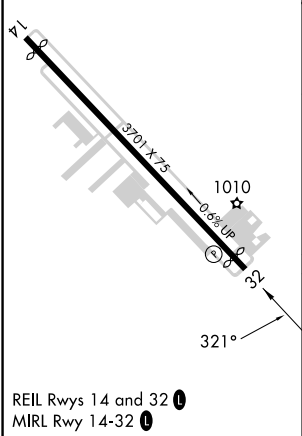
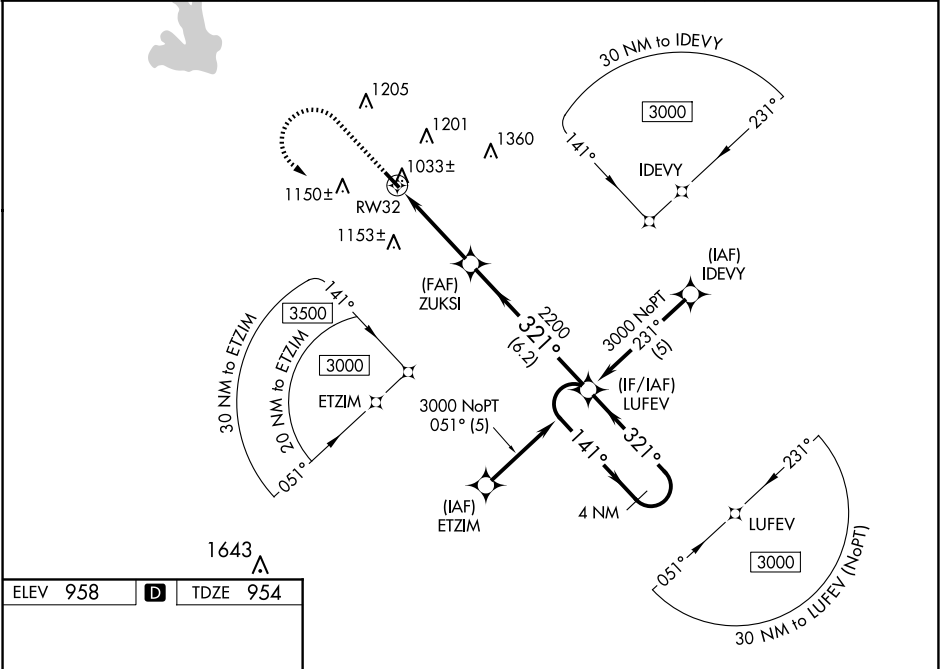





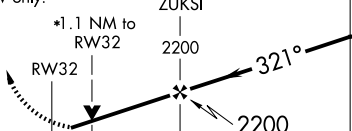
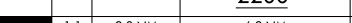
WAAS CH 65729 W32A	APP CRS 321°	Rwy Idg TDZE 954 Apt Elev 958	3273
--	------------------------	---	-------------

RNAV (GPS) RWY 32

Griffin-Spalding County (6A2)

RNP APCH. ⚠ NA For uncompensated Baro-VNAV systems, LNAV/VNAV NA below -16°C or above 54°C. Rwy 32 helicopter visibility reduction below ¾ SM NA. Baro-VNAV and VDP NA with Atlanta Rgnl Falcon Fld altimeter setting. When local altimeter setting not received, use Atlanta Rgnl Falcon Fld altimeter setting and increase all DA/MDA 60 feet; increase LPV and LNAV/VNAV all Cats visibility ½ mile.		MISSED APPROACH: Climb to 1500 then climbing left turn to 3000 direct LUFEV and hold.	
AWOS-3 119.750	Atlanta APP CON 128.575 343.675	CLNC DEL 128.575 343.675	UNICOM 123.075 (CTAF) 0



1500	3000	LUFEV	VGSI and RNAV glidepath not coincident (VGSI Angle 3.50/TCH 29).			
						
*LNAV only.			4 NM Holding Pattern			
			LUFEV		3000	
			141°		GP 3.00° TCH 40	
CATEGORY	A		B	C	D	
LPV DA	1204-7/8 250 (300-7/8)			NA		
LNAV/ VNAV	1204-7/8 250 (300-7/8)			NA		
LNAV MDA	1300-1 346 (400-1)			NA		