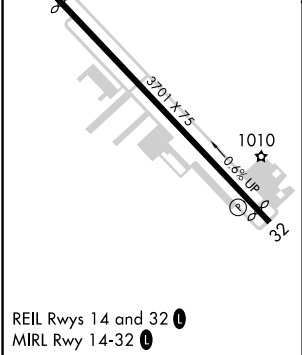
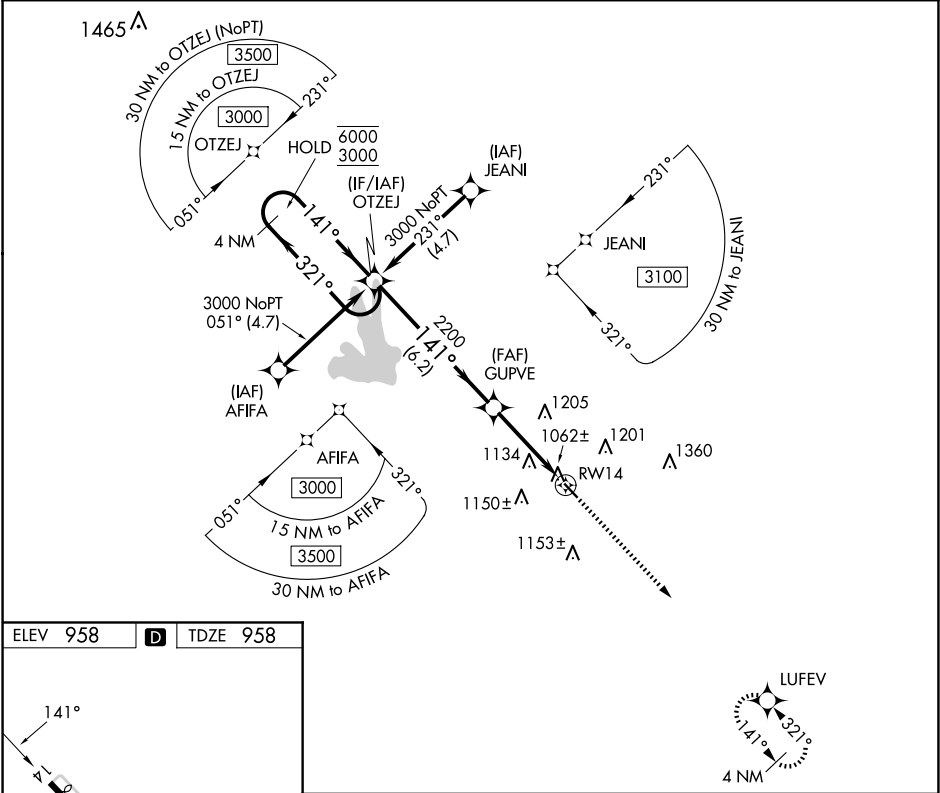


WAAS CH <b>70429</b> <b>W14A</b>	APP CRS <b>141°</b>	Rwy Idg TDZE Apt Elev	<b>3201</b> <b>958</b> <b>958</b>
--	------------------------	-----------------------------	---

RNAV (GPS) RWY 14

GRIFFIN-SPALDING COUNTY (6A2)

RNP APCH - GPS.		MISSED APPROACH: Climb to 3000 direct LUFEV and hold.	
<div><div></div>Procedure NA at night. Rwy 14 helicopter visibility reduction below 1 SM NA.</div>			
AWOS-3 <b>119.750</b>	ATLANTA APP CON <b>128.575 343.675</b>	CLNC DEL <b>128.575 343.675</b>	UNICOM <b>123.075 (CTAF)</b>



4 NM Holding Pattern		OTZEJ		Visual Segment - Obstacles.		3000 ↑	LUFEV ✦
6000 3000		←321° 141°→		GUPVE 2200		RW14	
		6.2 NM		3.8 NM			
CATEGORY	A	B	C	D			
LP MDA	1320-1	362 (400-1)	NA				
LNAV MDA	1440-1	482 (500-1)	NA				