

WAAS CH 69329 W23A	APP CRS 227°	Rwy Idg 5405 TDZE 716 Apt Elev 725
----------------------------------------	------------------------	---------------------------------------------------------------

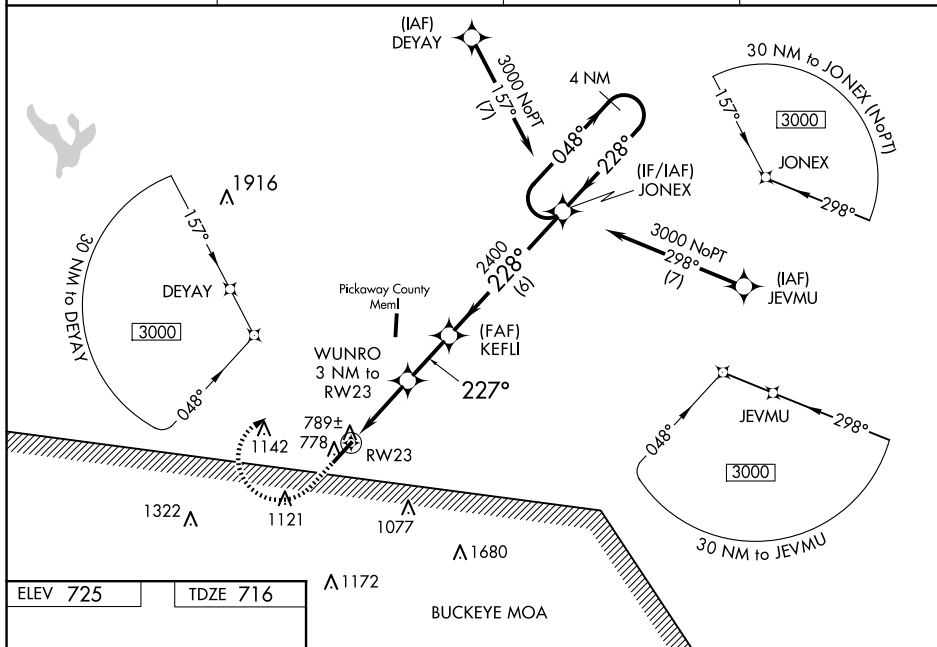
RNAV (GPS) RWY 23

RNP APCH - GPS.

- T** For uncompensated Baro-VNAV systems, LNAV/VNAV NA below -16°C or above 54°C.
- A** When local altimeter setting not received, use Rickenbacker Intl altimeter setting and increase all DA/MDA 60 feet, increase LPV all Cats, LNAV/VNAV all Cats and LNAV Cat C and D and Circling Cat C visibility ¼ mile. Baro-VNAV and VDP NA when using Rickenbacker Intl altimeter setting. Rwy 23 helicopter visibility reduction below ¾ SM NA.

MISSED APPROACH:
Climb to 1500 then
climbing right turn to
3000 direct JONEX
and hold.

AWOS-3 119.225	COLUMBUS APP CON 134.0 279.6	UNICOM 122.8 (CTAF)	123.0
--------------------------	----------------------------------------	-------------------------------	------------------------------------------------------------------------------------------------



REIL Rwy 5 and 23

MIRL Rwy 5-23

CATEGORY	A	B	C	D
LPV DA		966-3/4	250 (300-3/4)	
LNNAV/VNAV DA		1088-1 1/4	372 (400-1 1/4)	
LNNAV MDA		1040-1	324 (400-1)	
CIRCLING	1320-1 595 (600-1)	1380-1 655 (700-1)	1500-2 1/4 775 (800-2 1/4)	1540-2 3/4 815 (900-2 3/4)