

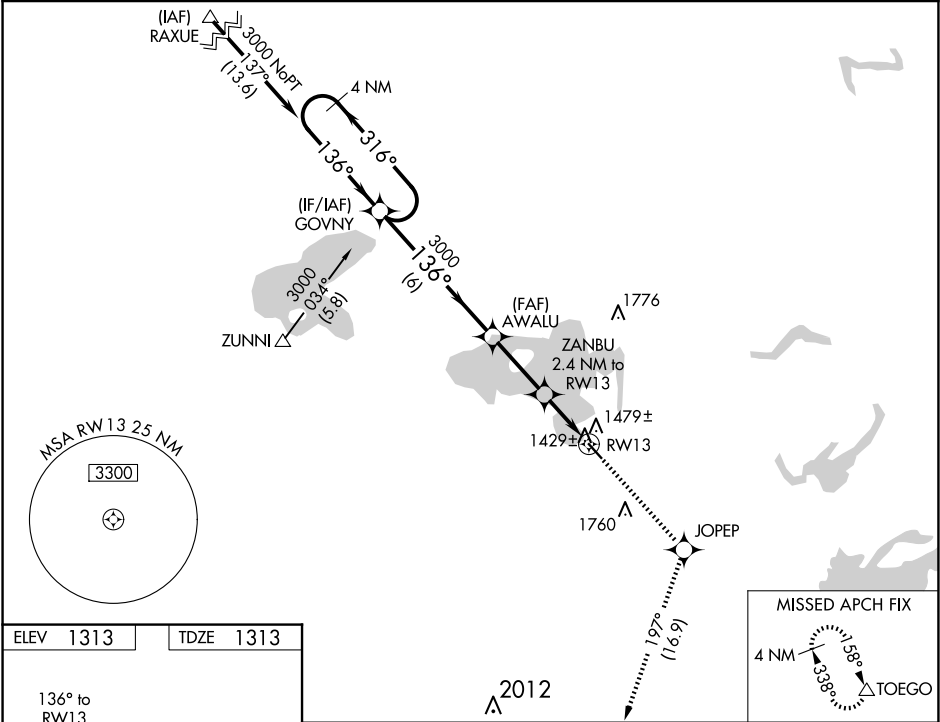
WAAS CH 69224 W13A	APP CRS 136°	Rwy Idg TDZE Apt Elev	4000 1313 1313
--	------------------------	-----------------------------	---

RNAV (GPS) RWY 13

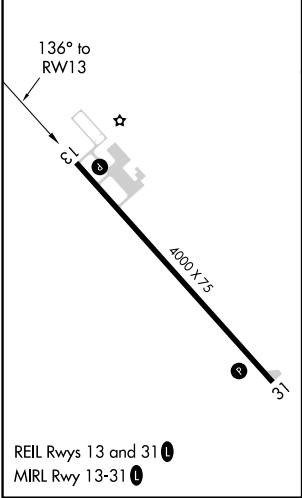
ORR RGNL(ORB)

RNP APCH. ▼ Rwy 13 helicopter visibility reduction below ¾ SM NA. When local altimeter setting not received, use Cook altimeter setting; increase all MDA 40 feet and increase Circling visibility Cat C ¼ SM. VDP NA when using Cook altimeter setting. ⚠	MISSED APPROACH: Climb to 3600 direct JOPEP and on track 197° to TOEGO and hold.
--	--

AWOS-3 118.325	MINNEAPOLIS CENTER 120.9 377.1	GCO 121.725	UNICOM 122.8 (CTAF) ❶
--------------------------	--	-----------------------	---------------------------------



ELEV 1313	TDZE 1313
------------------	------------------



VGSI and descent angles not coincident (VGSI Angle 3.00/TCH 20).				3600	JOPEP	tr 197°	TOEGO
4 NM Holding Pattern				3000	3000	2100	
3000 ← 316° → 136° → 3000				3.00° TCH 40	2.4 NM to RWY 13	1.2 NM to RWY 13	
6 NM		2.8 NM		1.2	1.2		
CATEGORY	A	B	C	D			
LP MDA	1720-1	407 (500-1)	1720-1½ 407 (500-1½)	NA			
LNAV MDA	1760-1	447 (500-1)	1760-1¾ 447 (500-1¾)	NA			
CIRCLING	1920-1	607 (700-1)	2120-2¼ 807 (900-2¼)	NA			

NC-1, 07 AUG 2025 to 04 SEP 2025

NC-1, 07 AUG 2025 to 04 SEP 2025