

WAAS CH <b>49201</b> <b>W18A</b>	APP CRS <b>181°</b>	Rwy Idg <b>6503</b> TDZE <b>298</b> Apt Elev <b>298</b>
--	------------------------	---

RNAV (GPS) RWY 18

HATTIESBURG/LAUREL RGNL (PIB)

RNP APCH-GPS.

T

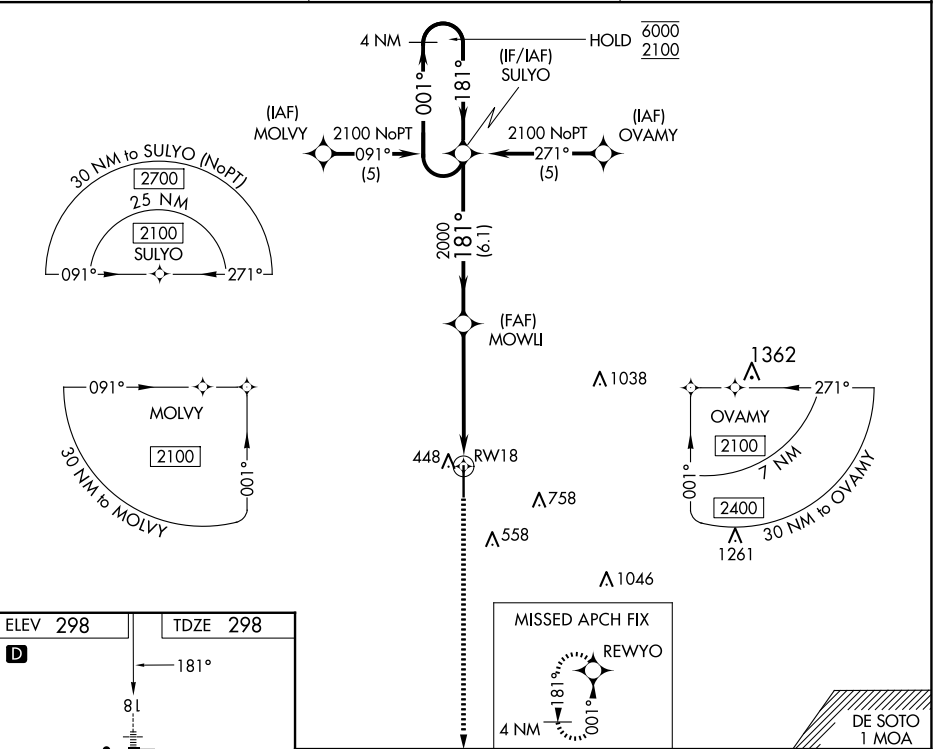
A

For uncompensated Baro-VNAV systems, LNAV/VNAV NA below -15°C or above 54°C.

MALSR

MISSED APPROACH:  
Climb to 2000 direct  
REWYO and hold.

AWOS-3PT <b>128.325</b>	HOUSTON CENTER <b>126.8 327.8</b>	UNICOM <b>123.0 (CTAF) 1</b>
----------------------------	--------------------------------------	---------------------------------



ELEV 298 TDZE 298

D

HIRL Rwy 18-36 1  
REIL Rwy 18 and 36 1

4 NM Holding Pattern			
<div><div>6000 ← 001°</div><div>2100 → 181°</div><div>GP 3.00° TCH 60</div></div>			
<div><div>SULYO</div><div>MOWLI</div><div>RW18</div><div>DE SOTO 1 MOA</div></div>			
<div><div>6.1 NM</div><div>3.7 NM</div><div>1.4</div></div>			
CATEGORY	A	B	C
LPV DA		498-1/2 200 (200-1/2)	
LNAV/VNAV DA		691-5/8 393 (400-5/8)	
LNAV MDA	820-1/2 522 (600-1/2)	820-1 522 (600-1)	
CIRCLING	820-1 522 (600-1)	1120-2 822 (900-2 1/2)	1120-2 3/4 822 (900-2 3/4)