

VORTAC FBC <b>108.2</b> Chan <b>19</b>	APP CRS <b>051°</b>	Rwy Ldg TDZE Apt Elev <b>752</b>	N/A N/A <b>752</b>
--	------------------------	---	--------------------------

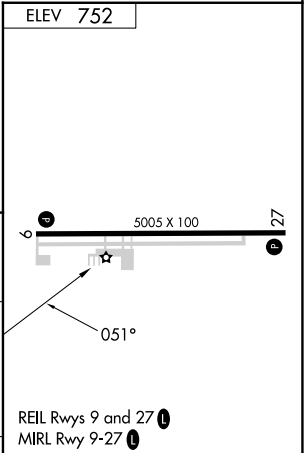
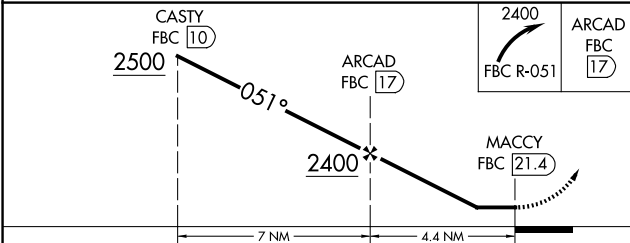
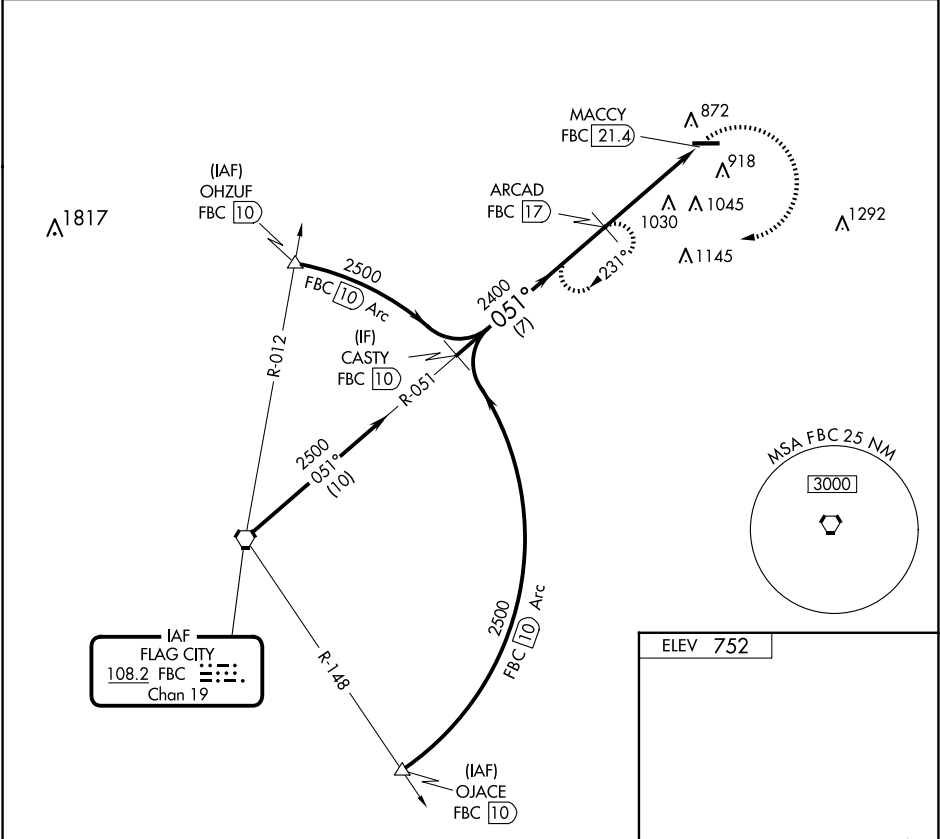
VOR-A  
DONALD P MILLER (FZI)


DME required.

When local altimeter setting not received, use Findlay  
altimeter setting and increase all MDA 60 feet, and  
increase Cat C visibility ¼ mile.

MISSED APPROACH: Climbing right turn to 2400 on  
FBC VORTAC R-051 to ARCAD/FBC 17 DME and hold.

AWOS-3 <b>124.625</b>	TOLEDO APP CON <b>126.1 307.0</b>	UNICOM <b>122.7</b> (CTAF) <b>0</b>
--------------------------	--------------------------------------	--



CATEGORY	A	B	C	D	FAF to MAP 4.4 NM					
 CIRCLING	1400-1	1400-1¼	1400-1¾	NA	Knots	60	90	120	150	180
	648 (700-1)	648 (700-1¼)	648 (700-1¾)		Min:Sec	4:24	2:56	2:12	1:46	1:28