

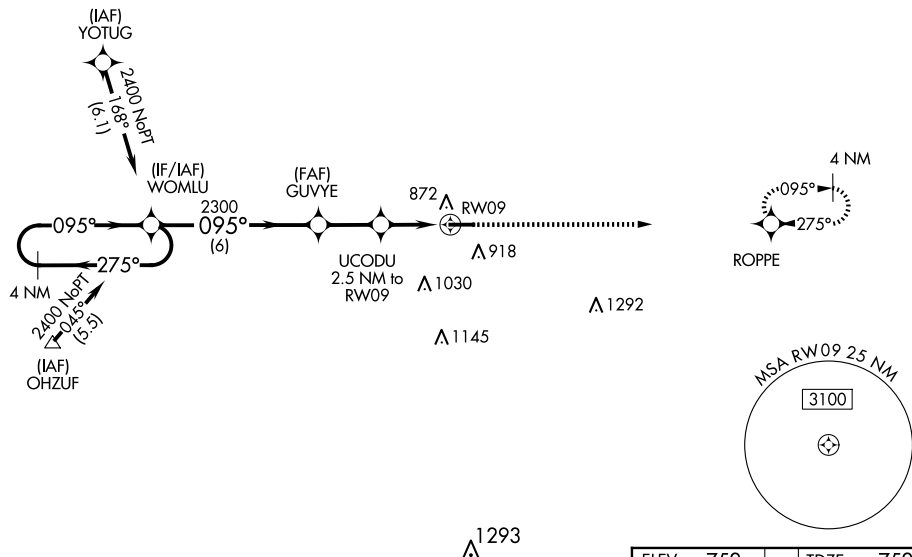
WAAS CH <b>53529</b> <b>W09A</b>	APP CRS <b>095°</b>	Rwy Ldg <b>5005</b> TDZE <b>752</b> Apt Elev <b>752</b>
----------------------------------------	------------------------	---------------------------------------------------------------

RNAV (GPS) RWY 9  
DONALD P MILLER (FZI)

**▼** DME/DME RNP-0.3 NA. Visibility reduction by helicopters NA. Baro-VNAV NA when using Findlay altitude setting. For uncompensated Baro-VNAV systems, LNAV/VNAV NA below -16°C (4°F) or above 54°C (130°F). When local altimeter setting not received, use Findlay altimeter setting and increase LPV DA to 1121 feet and all visibilities  $\frac{1}{2}$  SM; increase LNAV/VNAV DA to 1121 feet and all visibilities  $\frac{1}{2}$  SM; increase all MDAs 60 feet and LNAV Cat C visibility  $\frac{1}{8}$  SM, increase Circling Cat C visibility  $\frac{1}{4}$  SM. When VGSi inop, Straight-in/Circling Rwy 9 procedure NA at night.

**MISSED APPROACH:**  
Climb to 2400 direct  
ROPPE and hold.

AWOS-3 <b>124.625</b>	TOLEDO APP CON <b>126.1 307.0</b>	UNICOM <b>122.7 (CTAF) ①</b>
--------------------------	--------------------------------------	---------------------------------

[illegible]