

NDB	EOE	APP CRS	Rwy Idg	4001
278		213°	TDZE	570
			Apt Elev	570

NDB RWY 22

NEWBERRY COUNTY (EOE)

RNAV 1 - GPS or RADAR required for procedure entry.

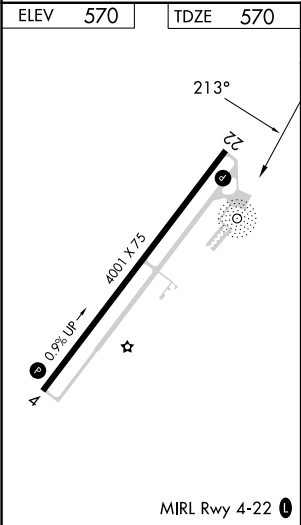
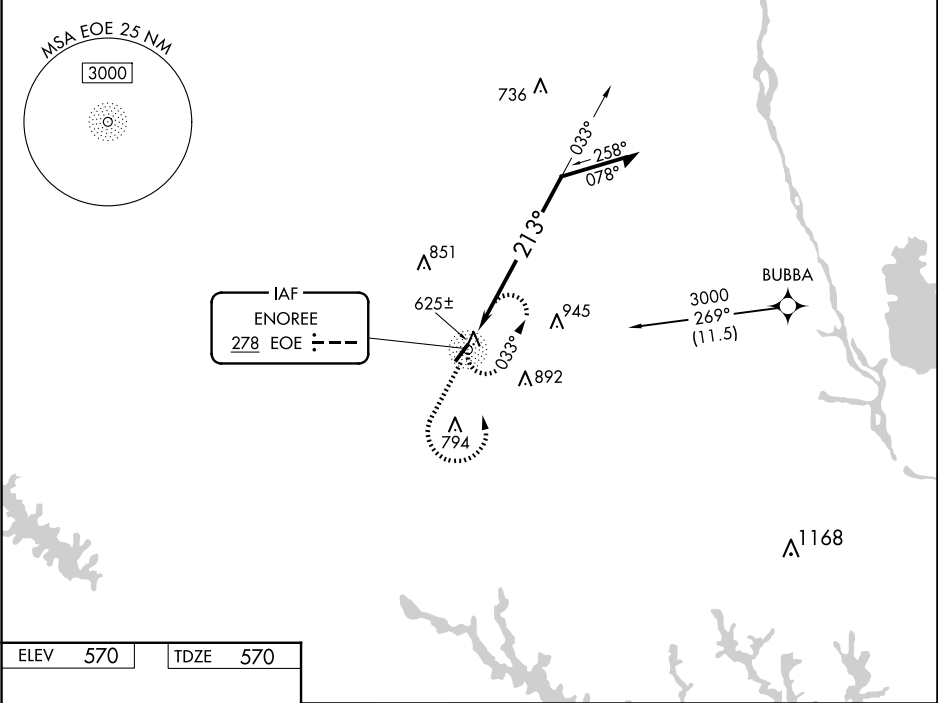
▼

Rwy 22 helicopter visibility reduction below ¾ SM NA. When local altimeter setting not received, use Greenwood altimeter setting and increase all MDAs 80 feet.

MISSED APPROACH:

Climb to 1800 then climbing left turn to 3000 direct EOE NDB and hold.

AWOS-3 124.275	COLUMBIA APP CON 133.4 285.6	UNICOM 122.8 (CTAF) 0
-------------------	---------------------------------	--------------------------



1800	3000	EOE	Remain within 10 NM	
		EOE NDB	033°	2500
			213°	
CATEGORY	A	B	C	D
S-22	1100-1	530 (600-1)	NA	
CIRCLING	1100-1	1160-1	NA	
	530 (600-1)	590 (600-1)		

SE-2, 07 AUG 2025 to 04 SEP 2025

SE-2, 07 AUG 2025 to 04 SEP 2025