

APP CRS	Rwy Idg	4400
009°	TDZE	777
	Apt Elev	779

RNAV (GPS) RWY 1

PERU MUNI (I76)

RNP APCH - GPS.

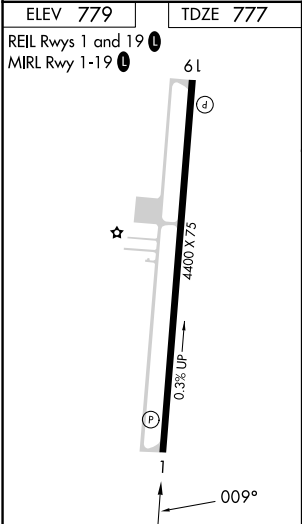
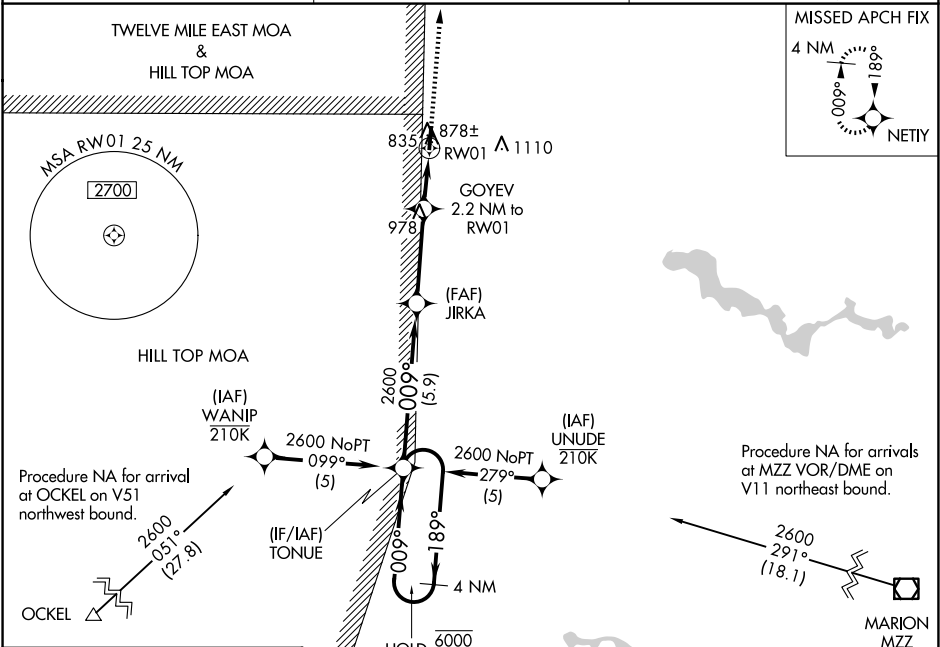
▼

▲ NA

Rwy 1 helicopter visibility reduction below 1 SM NA. Use Grissom ARB altimeter setting, when not received, use Logansport/Cass County altimeter setting: increase all MDAs 20 feet and Circling visibility Cat C and D ¼ SM.

MISSED APPROACH:
Climb to 2600 direct
NETIY and hold.

KGUS ATIS 132.55 270.8	GRISSOM APP CON ★ 121.05 338.275	UNICOM 122.8 (CTAF) 0
---------------------------	-------------------------------------	--------------------------



△ 1365			
4 NM Holding Pattern		TONUE	JIRKA
6000 2600		189° 009°	009° 2600
		3.00° TCH 47	1520
		5.9 NM	3.4 NM
		2.2	
CATEGORY	A	B	C
LNAV MDA	1160-1	383 (400-1)	1160-1½ 383 (400-1½)
CIRCLING	1280-1	501 (600-1)	1500-2 721 (800-2) 1500-2¼ 721 (800-2¼)

EC-2, 07 AUG 2025 to 04 SEP 2025

EC-2, 07 AUG 2025 to 04 SEP 2025