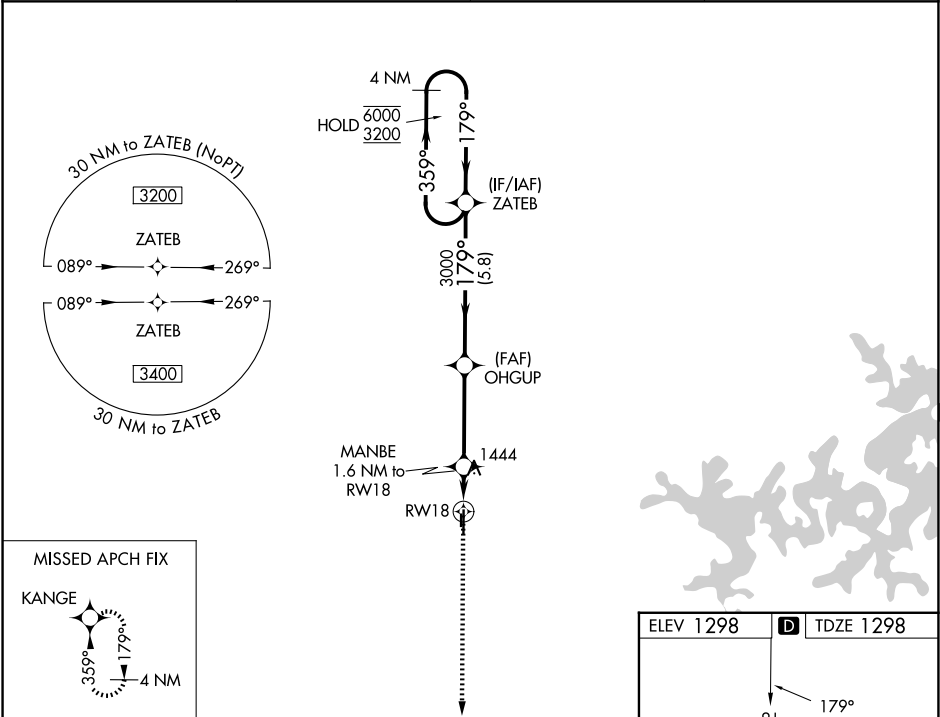


RNP APCH.		MISSED APPROACH: Climb to 3400 direct KANGE and hold.	
<div><div></div><div>Circling NA to Rwy 17 and 35. Rwy 18 helicopter visibility reduction below ¾ SM NA. For uncompensated Baro-VNAV systems, LNAV/VNAV NA below -17°C or above 54°C.</div></div>			
AWOS-3PT 134.975	RAZORBACK APP CON ★ 121.0 (WEST) 244.575	CLNC DEL 121.05 263.125	UNICOM 122.975 (CTAF) <b>U</b>



3400	KANGE				
*LNAV only.	MANBE 1.6 NM to RW18	OHGUP 3000	ZATEB	4 NM Holding Pattern	
		1900*	3000	359° → 6000 ← 179° 3200	GP 3.00° TCH 45
	1.6 NM	3.6 NM	5.8 NM		
CATEGORY	A	B	C	D	
LPV DA	1548-1		250 (300-1)		
LNAV/VNAV DA	1688-1½		390 (400-1½)		
LNAV MDA	1700-1	402 (500-1)	1700-1½	402 (500-1½)	
CIRCLING	1780-1	482 (500-1)	1920-1¾ 622 (700-1¾)	1940-2 642 (700-2)	

