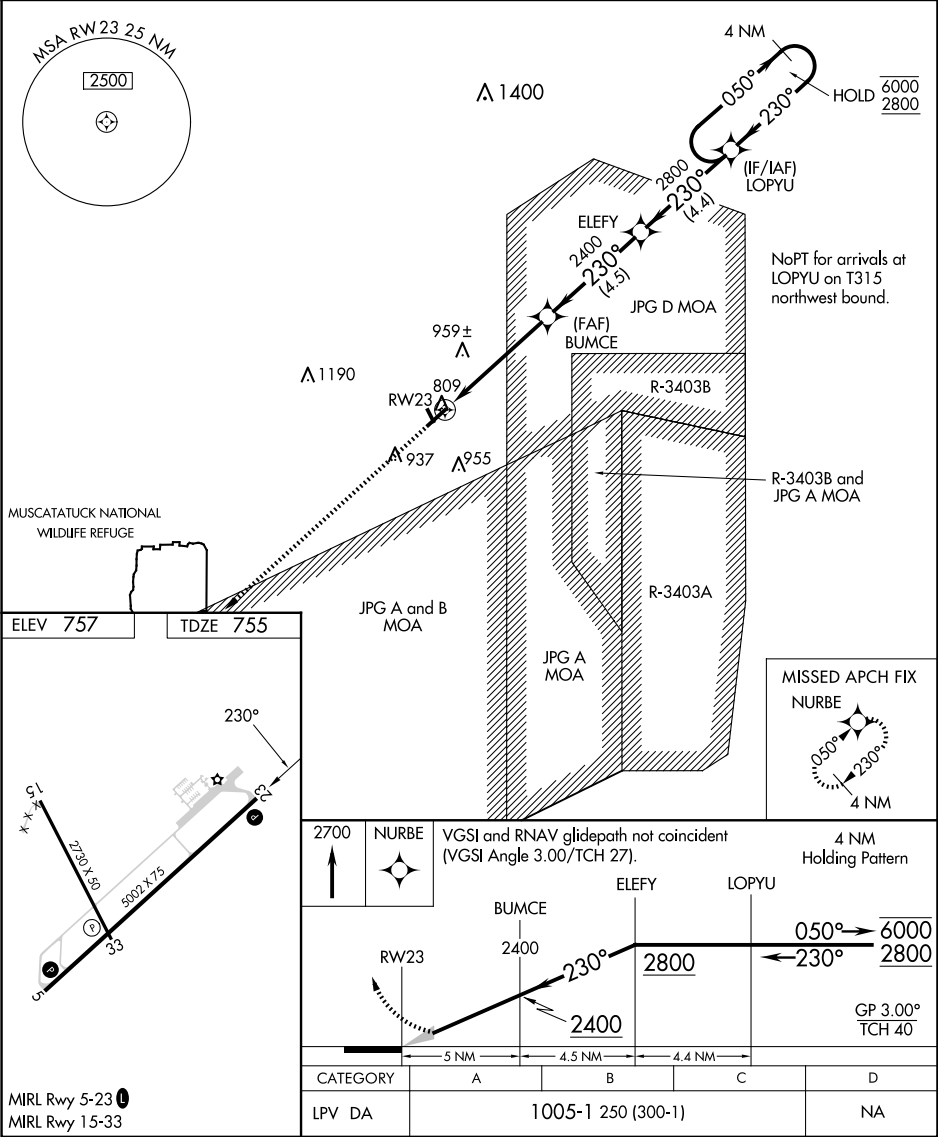


WAAS CH 63113 W23A	APP CRS 230°	Rwy Ldg TDZE 755 Apt Elev 757
--	------------------------	---

RNAV (GPS) Z RWY 23

NORTH VERNON (OVO)

RNP APCH - GPS.		MISSED APPROACH: Climb to 2700 direct NURBE and hold.
When local altimeter setting not received, use GEZ altimeter setting and increase LPV DA to 1089 feet all visibilities ¼ mile.		
AWOS-3 120.625	INDIANAPOLIS APP CON 134.85 317.8	UNICOM 122.7 (CTAF) 0



EC-2, 07 AUG 2025 to 04 SEP 2025

EC-2, 07 AUG 2025 to 04 SEP 2025