

| | | |
|--|------------------------|---|
| WAAS CH 45915 W09A | APP CRS 094° | Rwy Idg 5502 TDZE 141 Apt Elev 141 |
|--|------------------------|---|

RNAV (GPS) RWY 9

DECATUR COUNTY INDUSTRIAL AIR PARK (BGE)

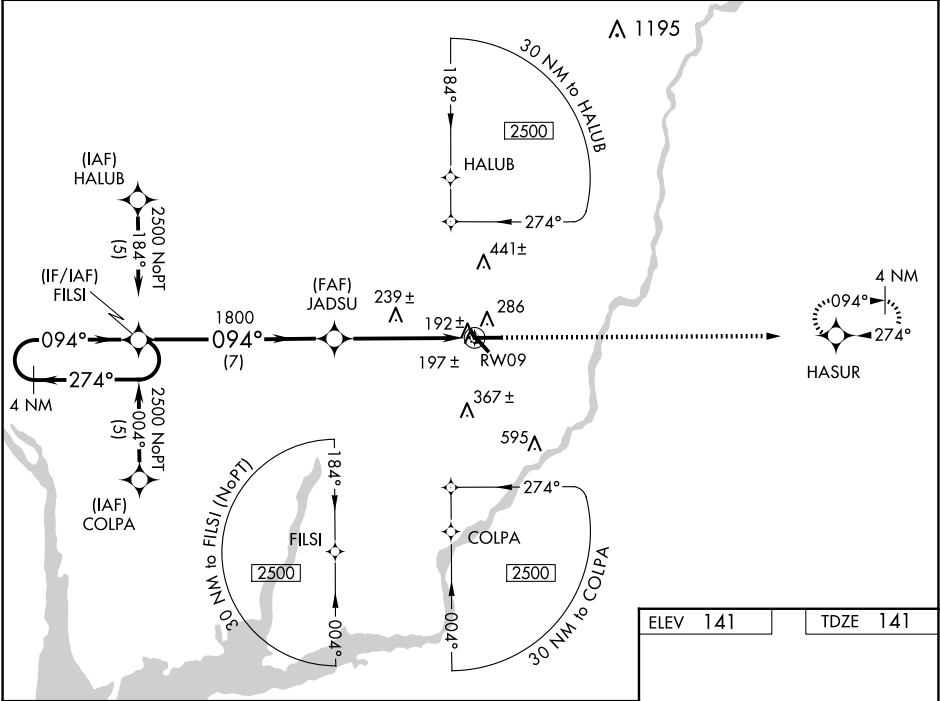
⚠

For uncompensated Baro-VNAV systems, LNAV/VNAV NA below -15°C (5°F) or above 48°C (118°F).
DME/DME RNP-0.3 NA. Visibility reduction by helicopters NA. VDP and Baro-VNAV NA when using Tallahassee Intl altimeter setting. When local altimeter setting not received, use Tallahassee Intl altimeter setting and increase LPV DA to 522 feet and LNAV/VNAV DA to 562 feet; increase all MDAs 100 feet and increase LPV all Cats, LNAV/VNAV all Cats and LNAV Cat C, D visibility ¼ SM and Circling Cat C, D visibility ½ SM.

⚠

MISSED APPROACH:
Climb to 2600 direct HASUR and hold.

| | | | |
|----------------------------|--|-----------------------------------|-----------------------------------|
| AWOS-3PT 121.125 | TALLAHASSEE APP CON★ 128.7 254.3 | CLNC DEL 124.775 335.65 | UNICOM 122.975 0 (CTAF) |
|----------------------------|--|-----------------------------------|-----------------------------------|



4 NM Holding Pattern

FILSI

JADSU

2600 HASUR

2500

1800

GP 3.00° TCH 40

*1.1 NM to RW09

*LNAV only

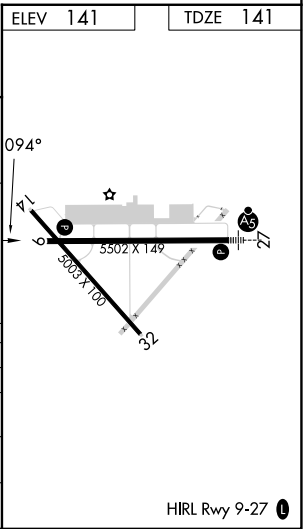
RW09

7 NM

3.9 NM

1.1

| | | | | |
|---------------|---------------------|---------------------|---------------------|---|
| CATEGORY | A | B | C | D |
| LPV DA | 427-1 286 (300-1) | | | |
| LNAV/ VNAV DA | 467-1¼ 326 (400-1¼) | | | |
| LNAV MDA | 540-1 399 (400-1) | | 540-1¼ 399 (400-1¼) | |
| CIRCLING | 600-1 459 (500-1) | 800-1¾ 659 (700-1¾) | 860-2¼ 719 (800-2¼) | |



SE-4, 07 AUG 2025 to 04 SEP 2025

SE-4, 07 AUG 2025 to 04 SEP 2025