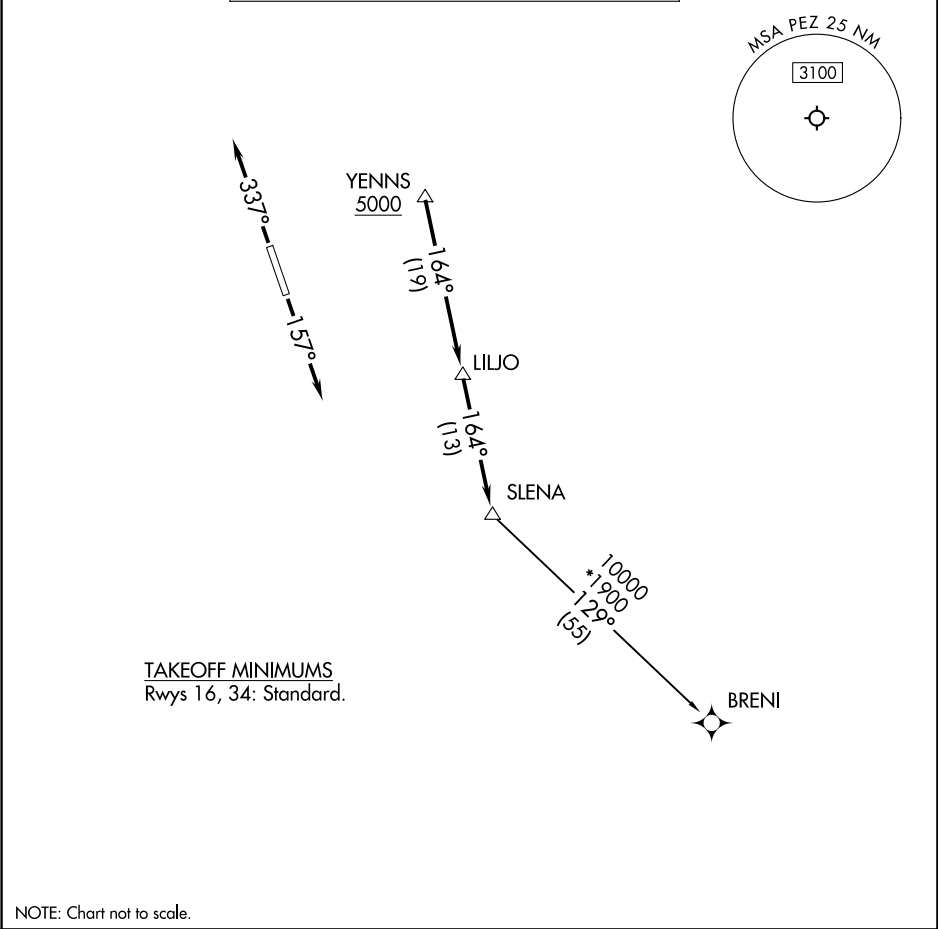


| | | |
|---|--|----------------------------------|
| SAN ANTONIO DEP CON 125.7 290.225 CLNC DEL 121.375 | RNAV 1 - DME/DME/IRU or GPS. RADAR required for non-GPS equipped aircraft. RADAR required. | TOP ALTITUDE: ASSIGNED BY ATC |
|---|--|----------------------------------|



| |
|---|
| <p>DEPARTURE ROUTE DESCRIPTION</p> <p><u>TAKEOFF RUNWAY 16:</u> Climb on heading 157° or as assigned by ATC, for vectors to YENNS. Thence. . .</p> <p><u>TAKEOFF RUNWAY 34:</u> Climb on heading 337° or as assigned by ATC, for vectors to YENNS. Thence. . .</p> <p>. . .on track 164° to LILJO, then on track 164° to SLENA, then on transition. Maintain ATC assigned altitude. Expect filed altitude 10 minutes after departure.</p> <p><u>BRENI TRANSITION (SLENA2.BRENI)</u></p> |
|---|