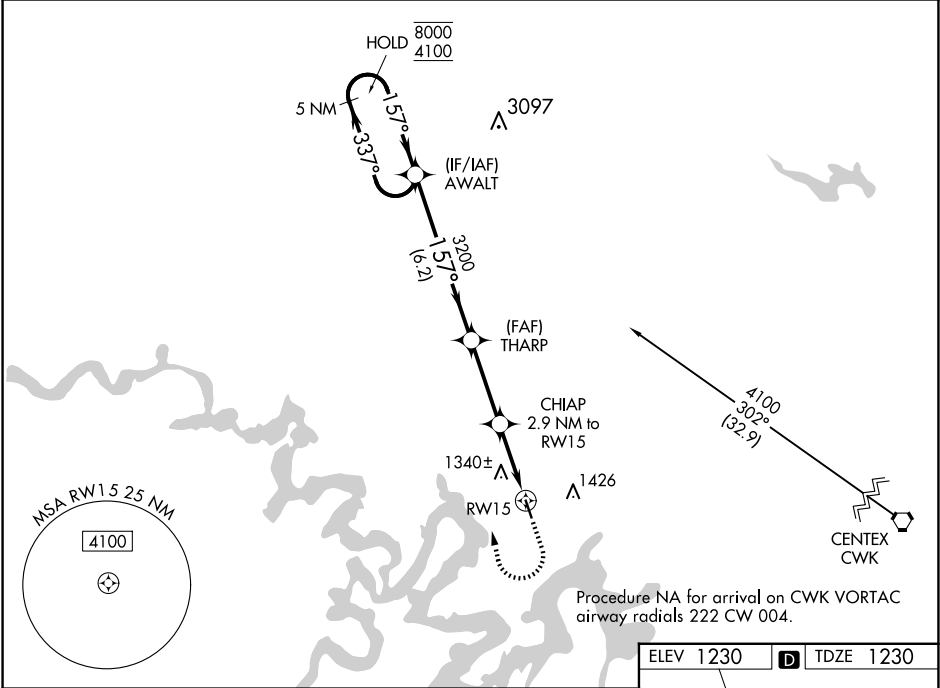


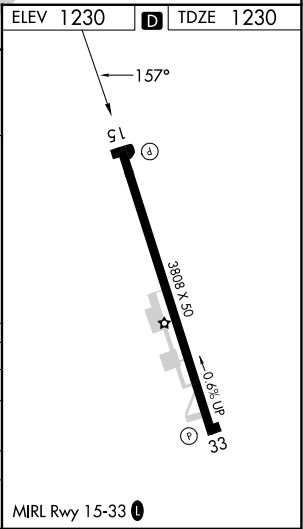
WAAS CH <b>81831</b> <b>W15A</b>	APP CRS <b>157°</b>	Rwy Idg TDZE Apt Elev	<b>3808</b> <b>1230</b> <b>1230</b>
--	------------------------	-----------------------------	---

RNAV (GPS) RWY 15  
LAGO VISTA TX/RUSTY ALLEN (RYW)

RNP APCH - GPS. ⚠ For uncompensated Baro-VNAV systems, LNAV/VNAV NA below -17°C or above 54°C. Rwy 15 helicopter visibility reduction below ¾ SM NA.		MISSED APPROACH: Climb to 1700 then climbing right turn to 4100 direct AWALT and hold, continue climb-in-hold to 4100.
AWOS-3PT <b>119.375</b>	AUSTIN APP CON <b>119.0 370.85</b>	UNICOM <b>122.725</b> (CTAF) <b>0</b>



VGSI and RNAV glidepath not coincident (VGSI Angle 4.00/TCH 56).				1700 ↑	4100 ↷	AWALT ✧
5 NM Holding Pattern						
8000 ← 337° 4100 → 157°						
GP 3.00° TCH 40						
AWALT						
THARP						
3200						
CHIAP				2.9 NM to RW15		
3200				0.8 NM to RW15		
2180				RW15 ↗		
6.2 NM				3.2 NM		
2.1 NM				0.8		
CATEGORY	A	B	C	D		
LPV DA	1480-1	250 (300-1)	NA			
LNAV/ VNAV DA	1641-1½	411 (500-1½)	NA			
LNAV MDA	1620-1	390 (400-1)	NA			
CIRCLING	1660-1 430 (500-1)	1860-1 630 (700-1)	NA			



SC-3, 07 AUG 2025 to 04 SEP 2025

SC-3, 07 AUG 2025 to 04 SEP 2025