

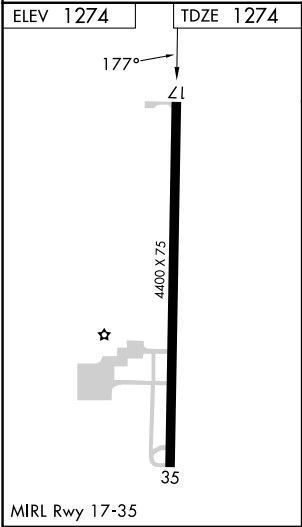
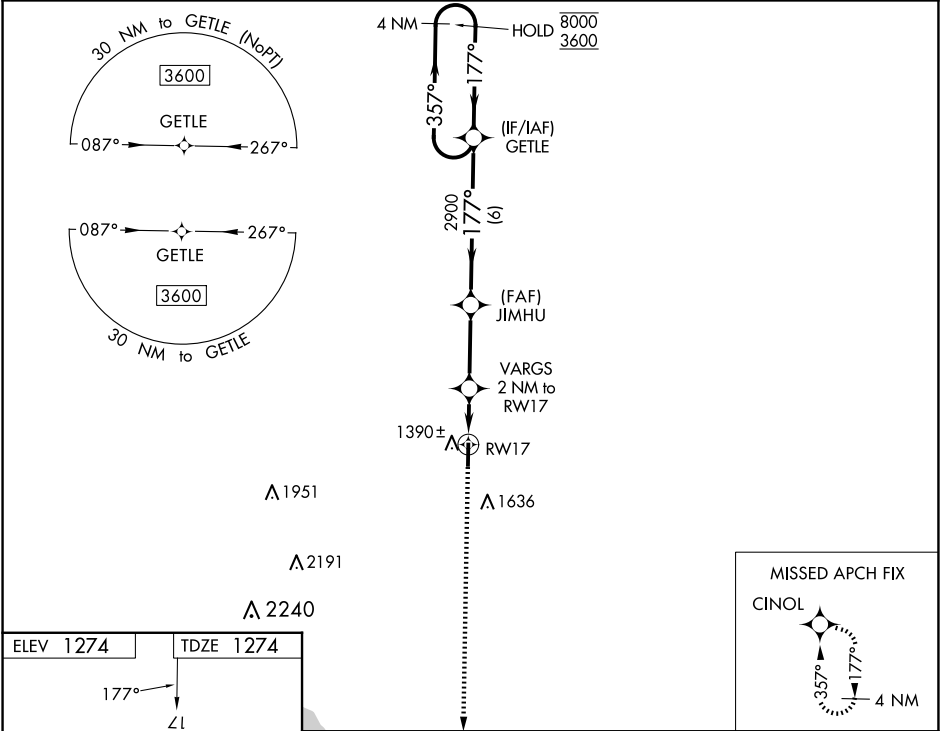
WAAS CH 62942 W17A	APP CRS 177°	Rwy Idg TDZE 1274 Apt Elev 1274
--	------------------------	---

RNAV (GPS) RWY 17

FAIRVIEW MUNI (6K4)

RNP APCH.	<div><div>▼</div><div>▲ NA</div><div>Circling Rwy 35 NA at night. Rwy 17 helicopter visibility reduction below $\frac{3}{4}$ SM NA. Baro-VNAV NA. Use Vance AFB altimeter setting; when not received, use Watonga altimeter setting; increase LPV DA to 1622 feet and all visibilities $\frac{1}{4}$ SM; increase LNAV/VNAV DA to 1678 feet and all visibilities $\frac{1}{4}$ SM; increase all MDA 40 feet.</div></div>	MISSED APPROACH: Climb to 3600 direct CINOL and hold.
-----------	---	---

AWOS-3PT 120.0	KEND ATIS ★ 115.4 263.15	VANCE APP CON ★ 126.75 346.325	UNICOM 122.8 (CTAF)
--------------------------	------------------------------------	--	-------------------------------



3600	CINOL	JIMHU	GETLE	4 NM Holding Pattern
*LNAV only.	VARGS 2 NM to RW17	2900	177°	8000 3600
RW17	1940*	2900	177°	GP 3.00° TCH 40
2 NM	3 NM	6 NM		
CATEGORY	A	B	C	D
LPV DA	1592-1 318 (400-1)			
LNAV/VNAV DA	1648-1 374 (400-1)			
LNAV MDA	1720-1	446 (500-1)	1720-1 $\frac{3}{8}$	446 (500-1 $\frac{3}{8}$)
CIRCLING	1840-1 566 (600-1)	2020-1 746 (800-1)	2020-2 $\frac{1}{4}$ 746 (800-2 $\frac{1}{4}$)	2180-3 906 (1000-3)