

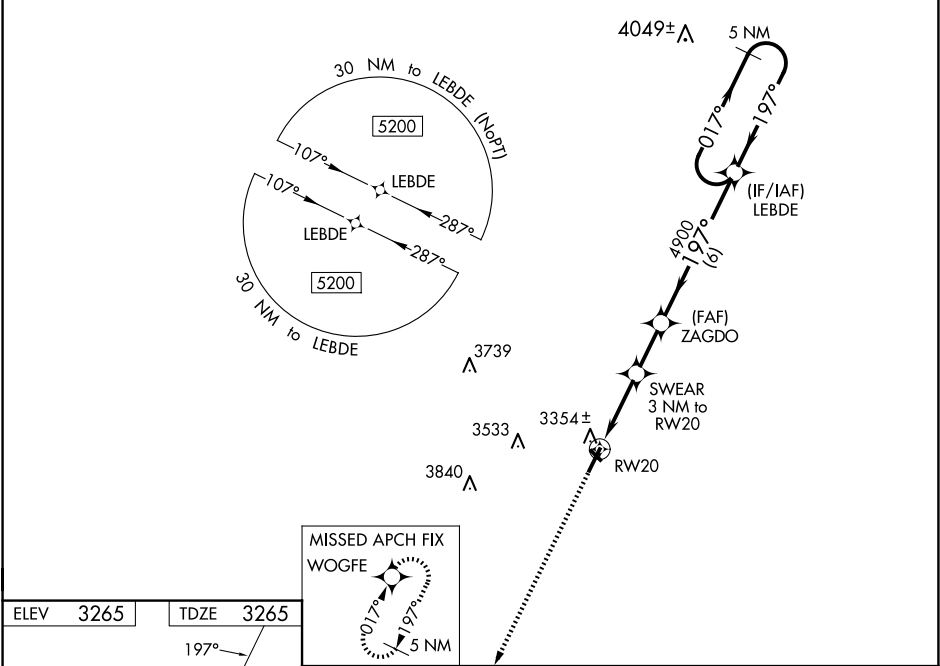
▼

▲NA

Baro-VNAV NA. Circling Rwy 13, 31 NA at night. Rwy 20 helicopter visibility reduction below ¾ SM NA. DME/DME RNP-0.3 NA. Use Lubbock altimeter setting, when not received, use Seminole altimeter setting and increase LPV DA to 3609 feet; increase LNAV/VNAV DA to 3629 feet; increase all MDA 20 feet and LNAV Cat C/D visibility ⅓ SM.

MISSED APPROACH: Climb to 5200 direct WOGFE and hold.

LBB ASOS 125.3 270.275	LUBBOCK APP CON 119.2 351.8	UNICOM 122.8 (CTAF) 0
---------------------------	--------------------------------	--------------------------



MRL Rwy 2-20

5200

↑

WOGFE

✦

*LNAV only.

SWEAR

3 NM to RW20

ZAGDO

4900

LEBDE

5 NM Holding Pattern

017°

197°

5200

GP 3.00°

TCH 41

RW20

3 NM

2 NM

6 NM

*4260

4900

CATEGORY	A	B	C	D
LPV DA	3598-1		333 (400-1)	
LNAV/VNAV DA	3618-1		353 (400-1)	
LNAV MDA	3700-1	435 (500-1)	3700-1¼	435 (500-1¼)
CIRCLING	3760-1 495 (500-1)	3920-1 655 (700-1)	3980-2 715 (800-2)	4100-2¾ 835 (900-2¾)