

WAAS CH <b>97528</b> <b>W32A</b>	APP CRS <b>324°</b>	Rwy Idg TDZE <b>1287</b> Apt Elev <b>1288</b>
--	------------------------	---

RNAV (GPS) RWY 32

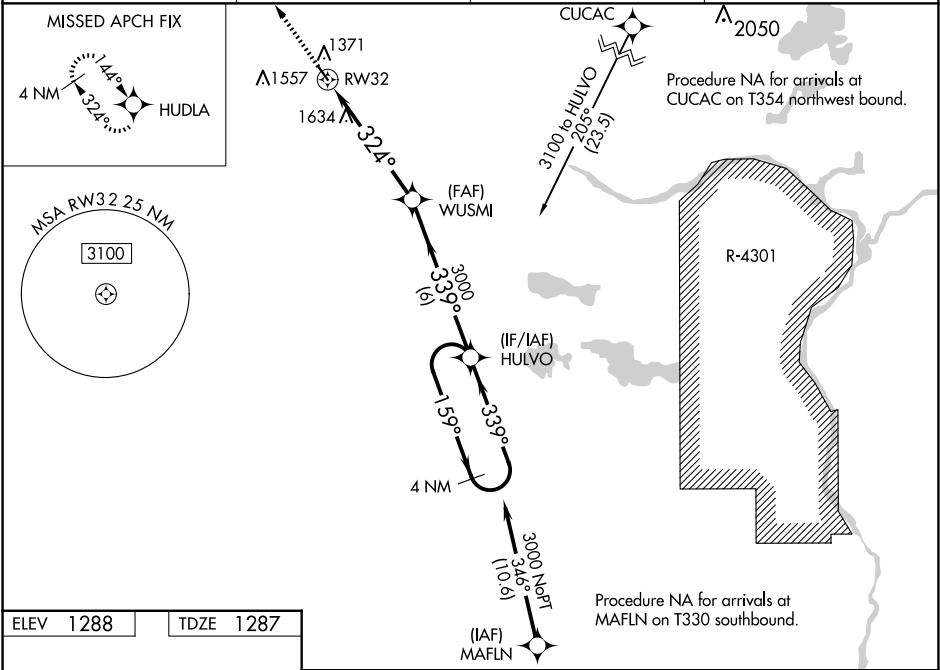
STAPLES MUNI (SAZ)

**⚠** Circling to Rwy 14 NA at night. Baro-VNAV NA when using Pine River altimeter setting.

**⚠** For uncompensated Baro-VNAV systems, LNAV/VNAV NA below -17°C (2°F) or above 54°C (130°F). DME/DME RNP-0.3 NA. When local altimeter setting not received, use Pine River altimeter setting and increase all DA 64 feet and all MDA 80 feet and increase LPV all Cats, LNAV/VNAV all Cats, LNAV Cat C and Circling Cat C visibility ¼ SM. Rwy 32 helicopter visibility reduction below ¾ SM NA.

MISSED APPROACH:  
Climb to 3000 direct  
HUDLA and hold.

AWOS-3 <b>118.325</b>	MINNEAPOLIS CENTER <b>118.05 239.0</b>	GCO <b>121.725</b>	CTAF <b>122.9</b>
--------------------------	---	-----------------------	----------------------



REIL Rwys 14 and 32

MIRL Rwy 14-32

324° to RW32

3000
↑

HUDLA

VGSI and RNAV glidepath not coincident (VGSI Angle 3.00/TCH 27).

WUSMI

3000

HULVO

4 NM Holding Pattern

339°

159°

3000

339°

3000

324°

5.3 NM

6 NM

GP 3.00° TCH 40

CATEGORY	A	B	C	D
LPV DA	1592-1 305 (400-1)			NA
LNAV/VNAV DA	1965-2 ½ 678 (700-2 ½)			NA
LNAV MDA	1900-1	613 (700-1)	1900-1 ¾ 613 (700-1 ¾)	NA
CIRCLING	1900-1 612 (700-1)	1940-1 652 (700-1)	1940-1 ¾ 652 (700-1 ¾)	NA