

WAAS CH 48805 W36A	APP CRS 001°	Rwy Idg 5501 TDZE 997 Apt Elev 1004
--	------------------------	--

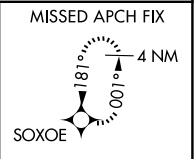
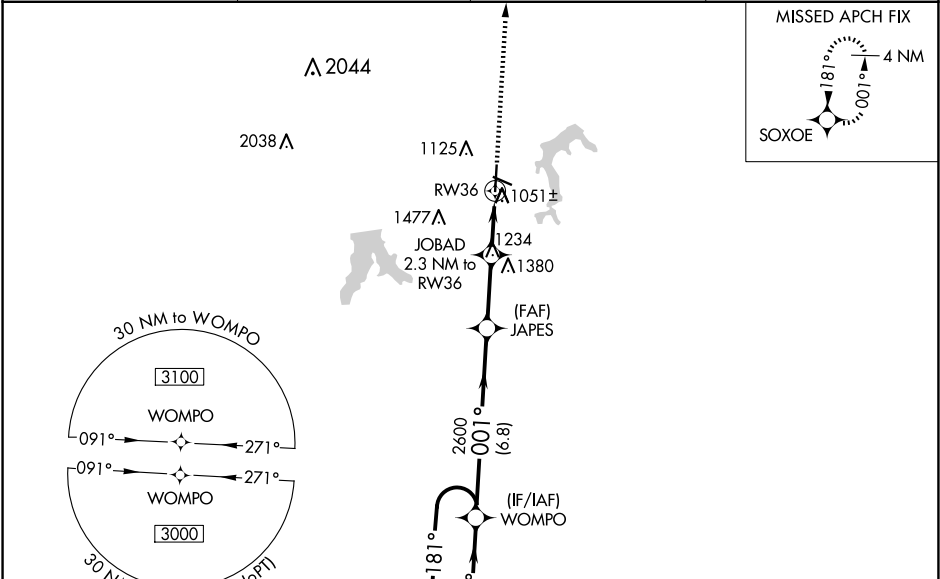
RNAV (GPS) RWY 36

KANSAS CITY/LEE'S SUMMIT RGNL (LX'T)

For uncompensated Baro-VNAV systems, LNAV/VNAV NA below -17°C (2°F) or above 54°C (130°F). Rwy 36 helicopter visibility reduction below ¾ SM NA. DME/DME RNP-0.3 NA. VDP and Baro-VNAV NA when using Kansas City Downtown/Wheeler Fld altimeter setting. When local altimeter setting not received, use Kansas City Downtown/Wheeler Fld altimeter setting: increase LPV DA to 1374 feet and all visibilities ½ SM; increase LNAV/VNAV to 1367 feet and all visibilities ½ SM; increase all MDA 80 feet and LNAV visibility Cats C and D ½ SM, Circling Cats C and D ¼ SM.

MISSED APPROACH: Climb to 3000 direct SOXOE and hold.

ASOS 124.175	KANSAS CITY APP CON 118.4 307.35	CLNC DEL 118.45	UNICOM 122.8 (CTAF) 0
------------------------	--	---------------------------	--



4 NM Holding Pattern		WOMPO		JAPES		JOBAD		RW36	
3000		181°		001°		2600		1760	
GP 3.00°		TCH 45		6.8 NM		2.6 NM		0.7	
CATEGORY		A		B		C		D	
LPV DA		1306-7/8		309 (400-7/8)					
LNAV/VNAV DA		1299-7/8		302 (300-7/8)					
LNAV MDA		1540-1 543 (600-1)		1540-1 5/8 543 (600-1 1/8)					
CIRCLING		1540-1 536 (600-1)		1780-2 1/4 776 (800-2 1/4)		1780-2 1/2 776 (800-2 1/2)			

