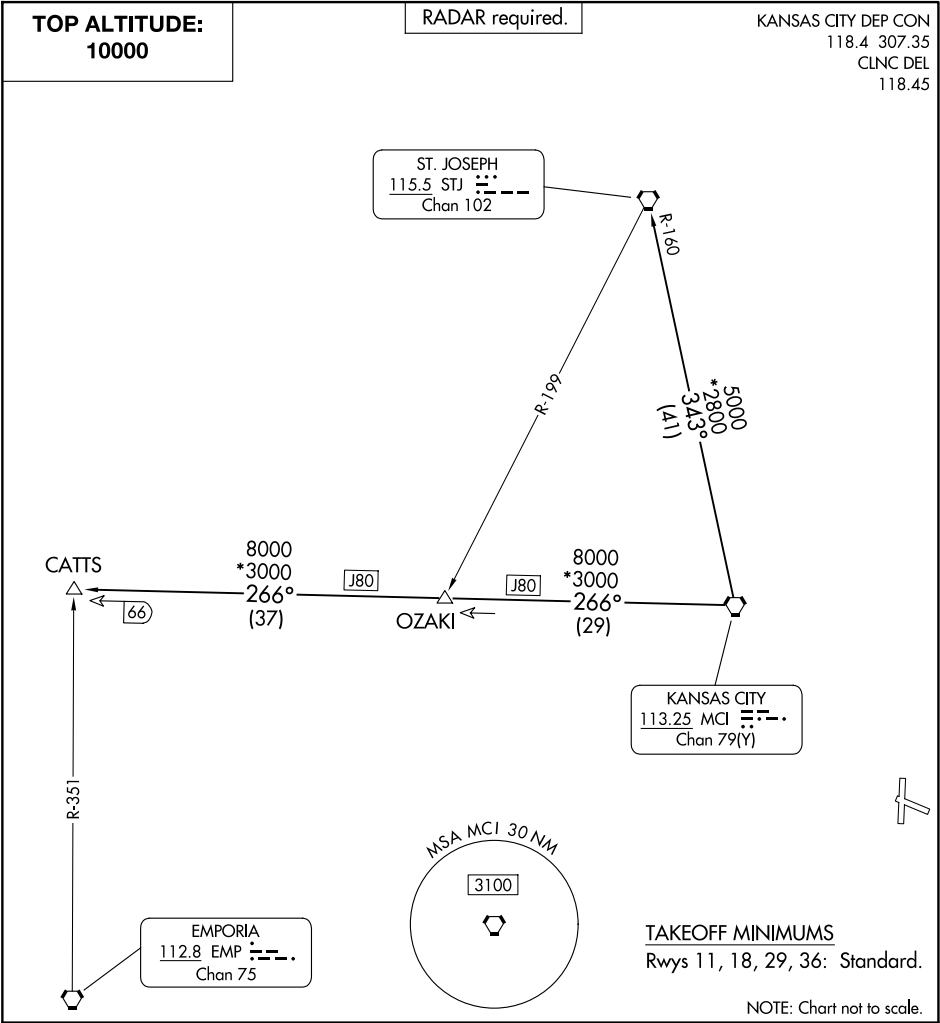


(CHIEF9.MCI) 25051
CHIEF NINE DEPARTURE

AL-6104 (FAA) KANSAS CITY/LEE'S SUMMIT RGNL (LX'T)
LEE'S SUMMIT, MISSOURI



DEPARTURE ROUTE DESCRIPTION

TAKEOFF ALL RUNWAYS: Climb on assigned heading for RADAR vectors to appropriate route. Maintain 10000 or as assigned by ATC, expect filed altitude 10 minutes after departure.

CATTS TRANSITION (CHIEF9.CATTS): From over MCI VORTAC on MCI R-266 to CATTS.

ST. JOSEPH TRANSITION (CHIEF9.STJ): From over MCI VORTAC on MCI R-343 and STJ R-160 to STJ VORTAC.