

KNOXVILLE, TENNESSEE

AL-6102 (FAA)

24137

VORTAC VXV 116.4 Chan 111	APP CRS 199°	Rwy Idg TDZE Apt Elev	N/A N/A 833
---	------------------------	-----------------------------	--

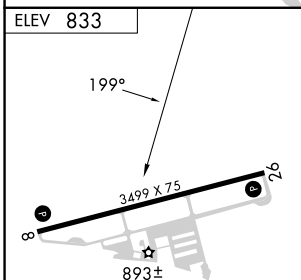
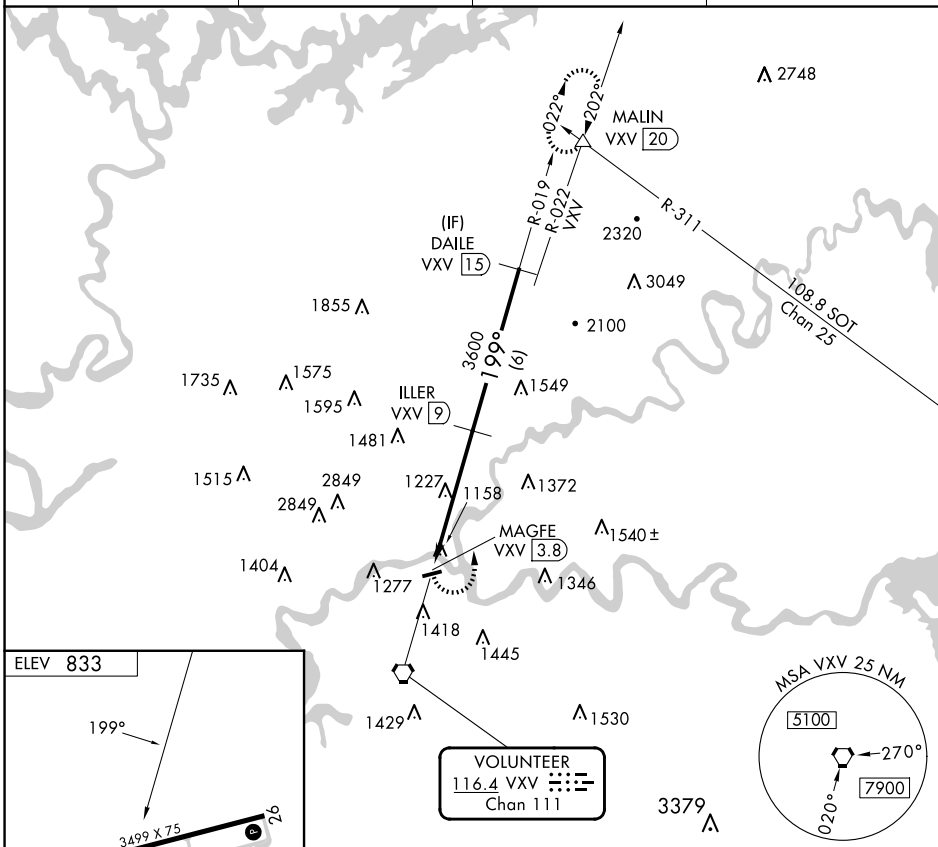
VOR-B

KNOXVILLE DOWNTOWN ISLAND (DKX)

DME required. RADAR required for procedure entry.

MISSED APPROACH: Climbing left turn to 4500 on heading 360° and VXX VORTAC R-022 to MALIN INT/VXX 20 DME and hold.

AWOS-3 125.375	KNOXVILLE APP CON 123.9 353.6	CLNC DEL 121.7	UNICOM 123.075 (CTAF) 0
--------------------------	---	--------------------------	-----------------------------------



CATEGORY	A	B	C	D
C CIRCLING	1700-1¼ 867 (900-1¼)	1720-1¼ 887 (900-1¼)	1720-2¾ 887 (900-2¾)	NA

KNOXVILLE, TENNESSEE
Amdt 8 19MAY22

KNOXVILLE DOWNTOWN ISLAND (DKX)

35°58'N-83°52'W

VOR-B

SE-1, 07 AUG 2025 to 04 SEP 2025

SE-1, 07 AUG 2025 to 04 SEP 2025