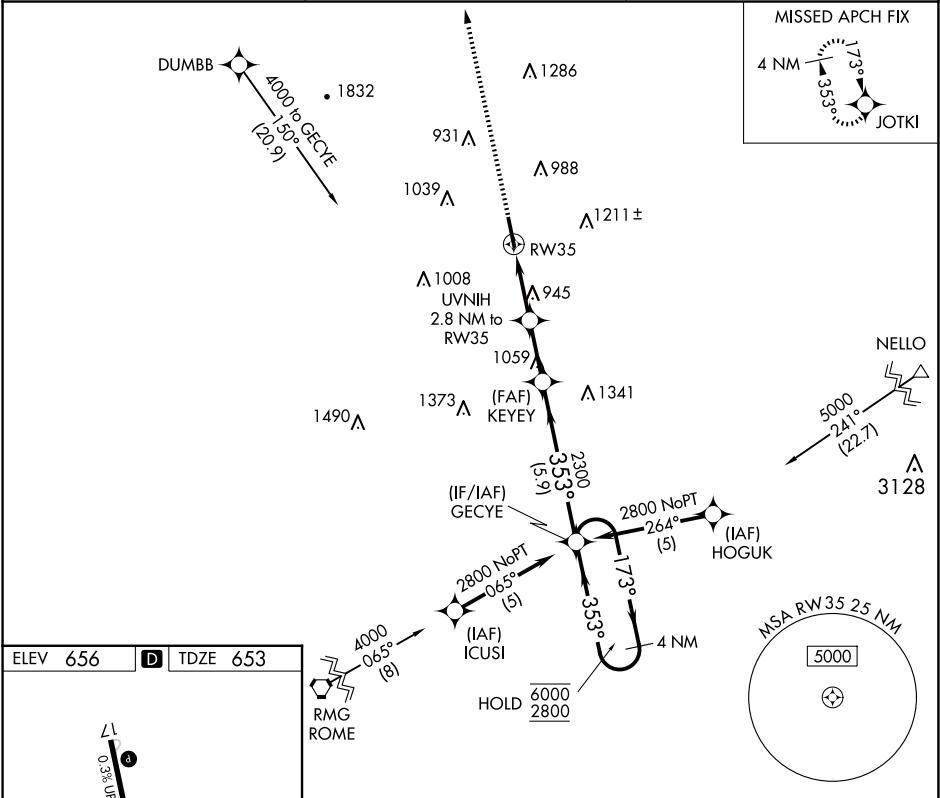


RNP APCH - GPS.	MISSED APPROACH: Climb to 3500 direct JOTKI and hold.
<div><div>▼</div><div>▲</div></div> Rwy 35 helicopter visibility reduction below ¾ SM NA.	

AWOS-3PT 119.975	ATLANTA CENTER 124.5 270.325	UNICOM 122.8 (CTAF) <b>0</b>
---------------------	---------------------------------	---------------------------------



MRL Rwy 17-35

603.4 x 100

3500

353°

35

3500	JOTKI	Visual Segment - Obstacles.		4 NM Holding Pattern	
CATEGORY	A	B	C	D	
LNAV MDA	1200-1	547 (600-1)	1200-1½	547 (600-1½)	
<b>C</b> CIRCLING	1320-1	664 (700-1)	1580-2¾ 924 (1000-2¾)	1580-3 924 (1000-3)	