

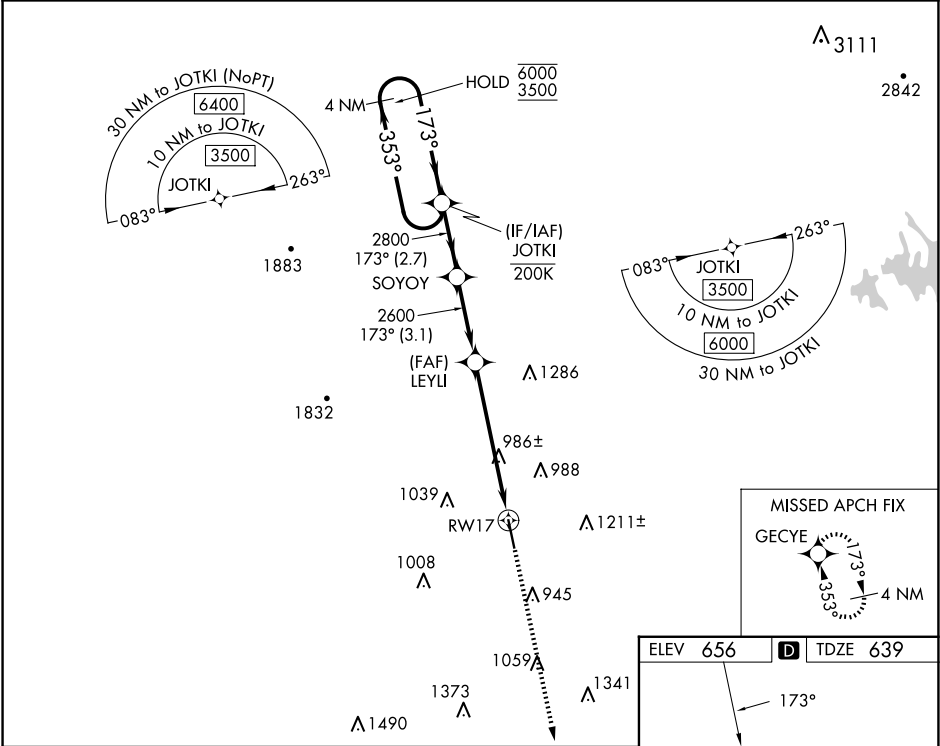
| | | |
|--|------------------------|---|
| WAAS CH 65636 W17A | APP CRS 173° | Rwy Idg TDZE 639 Apt Elev 656 |
|--|------------------------|---|

RNAV (GPS) RWY 17

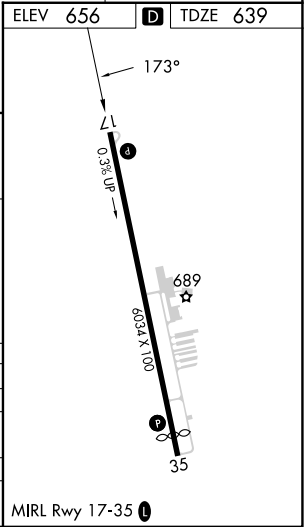
TOM B DAVID FLD (CZL)

| | |
|--|---|
| RNP APCH-GPS. | MISSED APPROACH: Climb to 2800 direct GECYE and hold. |
| <div><div>▼</div><div>Rwy 17 helicopter visibility reduction below ¾ SM NA.</div><div>▲</div><div>For uncompensated Baro-VNAV systems, LNAV/VNAV NA below -16°C or above 54°C.</div></div> | |

| | | |
|----------------------------|--|---------------------------------|
| AWOS-3PT 119.975 | ATLANTA CENTER 124.5 270.325 | UNICOM 122.8 (CTAF) 0 |
|----------------------------|--|---------------------------------|



| | | | | |
|--|----------------------|-------------|---------------|--------------|
| VGSI and RNAV glidepath not coincident (VGSI Angle 3.50/TCH 44). | | | | |
| 4 NM Holding Pattern | | | | |
| GP 3.10° TCH 60 | | | | |
| 2.7 NM 3.1 NM 4.5 NM 1.3 | | | | |
| CATEGORY | A | B | C | D |
| LPV DA | 930-1 291 (300-1) | | | |
| LNAV/VNAV DA | 1101-1¾ 462 (500-1¾) | | | |
| LNAV MDA | 1240-1 | 601 (600-1) | 1240-1¾ | 601 (600-1¾) |
| CIRCLING | 1320-1 | 664 (700-1) | 1580-2¾ | 1580-3 |
| | | | 924 (1000-2¾) | 924 (1000-3) |



SE-4, 07 AUG 2025 to 04 SEP 2025

SE-4, 07 AUG 2025 to 04 SEP 2025