

| | | | |
|------------|---------|----------|------|
| VORTAC STL | APP CRS | Rwy Idg | 3800 |
| 117.4 | 208° | TDZE | 437 |
| Chan 121 | | Apt Elev | 437 |

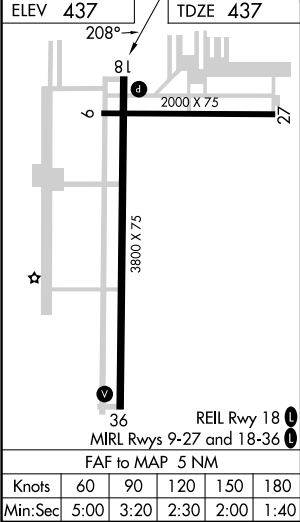
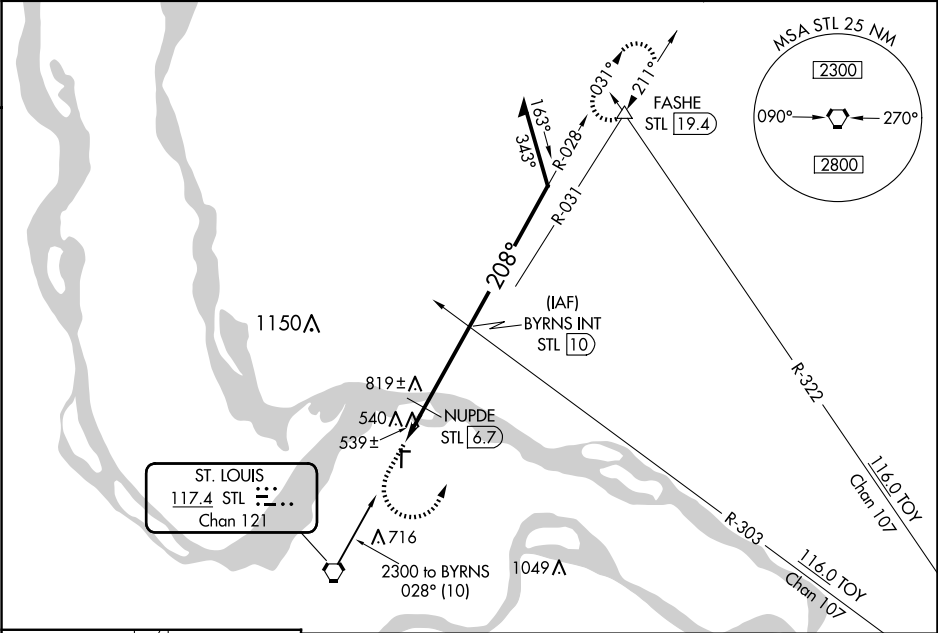
VOR RWY 18

ST CHARLES COUNTY RGNL/SMARTT FLD (SE/T)

⚠ When local altimeter setting not received, use St Louis Lambert Intl altimeter setting and increase all MDAs 60 feet and Circling visibility Cat C ¼ SM. NUPDE fix minimums: increase Circling visibility Cat C ¼ SM. Straight-in minimums NA with St Louis Lambert Intl altimeter setting.

MISSED APPROACH: Climb to 1000 then climbing left turn to 2700 via heading 360° and STL R-031 to FASHE INT/19.4 DME and hold.

| | | | |
|-----------------|----------------------------------|-------------------|--------------------------|
| ASOS 118.075 | ST. LOUIS APP CON 124.2 353.9 | CLNC DEL 121.6 | UNICOM 122.7 (CTAF) 0 |
|-----------------|----------------------------------|-------------------|--------------------------|



| | | | | | | | |
|---|----------------------|--------------|----------------------|---------------------------|-------------------------|--|------------------------|
| 1000 ↑ | 2700 hdg 360° | STL R-031 | FASHE △ | | | | |
| VGSI and descent angles not coincident (VGSI Angle 3.00/TCH 40). | | | | BYRNS INT STL 10 | | | |
| STL 5 | | | | STL 6 ≤3.77° TCH 43 | NUPDE STL 6.7 | 2300 | Remain within 10 NM |
| 1160* | | | | 2300 | 208° | 028° | |
| 1 NM | | | | 0.7 NM | 3.3 NM | *1220 when using St Louis Lambert Intl altimeter setting. | |
| CATEGORY | A | | B | | C | | D |
| S-18 | 1160-1 | | 723 (800-1) | | 1160-2 723 (800-2) | | NA |
| CIRCLING | 1160-1 | | 723 (800-1) | | 1220-2¼ 783 (800-2¼) | | NA |
| NUPDE FIX MINIMUMS | | | | | | | |
| S-18 | 800-1 363 (400-1) | | | | | NA | |
| CIRCLING | 840-1 403 (500-1) | | 900-1 463 (500-1) | | 1220-2¼ 783 (800-2¼) | | NA |