

APP CRS 180°	Rwy Idg 3800 TDZE 437 Apt Elev 437
------------------------	---

RNAV (GPS) RWY 18

ST CHARLES COUNTY RGNL/SMARTT FLD (SET)

T **A** DME/DME RNP-0.3 NA. When local altimeter setting not received, use St Louis Lambert Intl altimeter setting and increase all MDAs 60 feet; increase visibility Cat C ¼ SM. VDP NA with St Louis Lambert Intl altimeter setting.

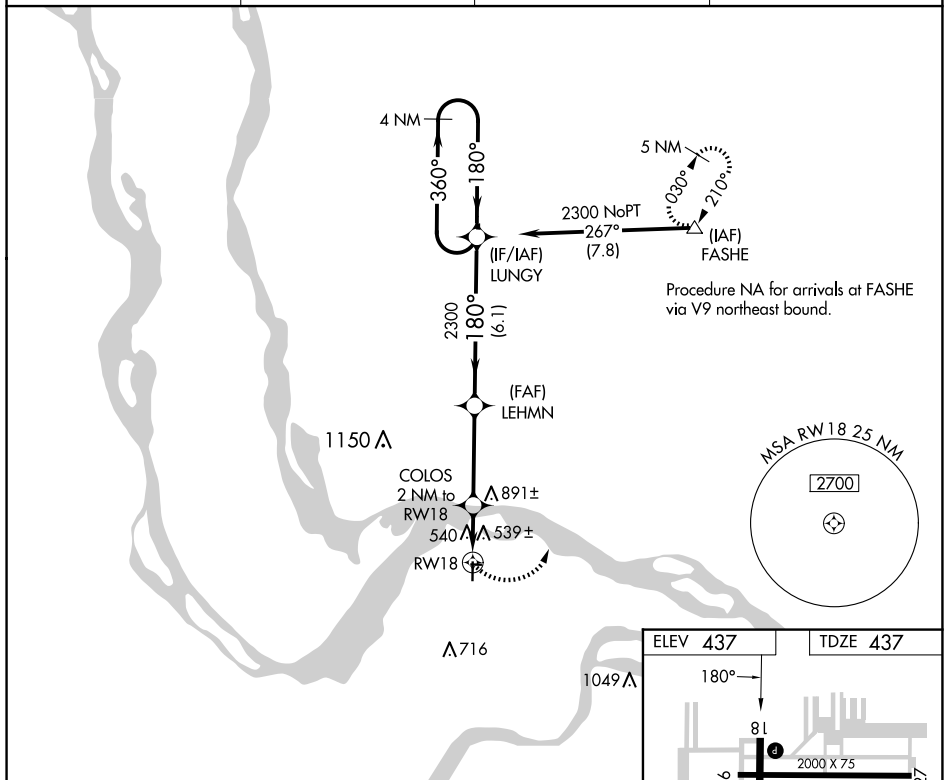
MISSED APPROACH: Climbing left turn to 2700 direct FASHE and hold.

ASOS
118,075

ST. LOUIS APP CON
124.2 353.9

CLNC DEL
121.6

UNICOM
122.7 (CTAF) **L**



NC-3, 07 AUG 2025 to 04 SEP 2025

