

WAAS CH <b>53708</b> <b>W13A</b>	APP CRS <b>130°</b>	Rwy Ldg <b>8001</b> TDZE <b>18</b> Apt Elev <b>19</b>
----------------------------------------	------------------------	-------------------------------------------------------------

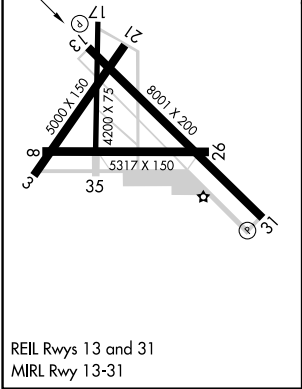
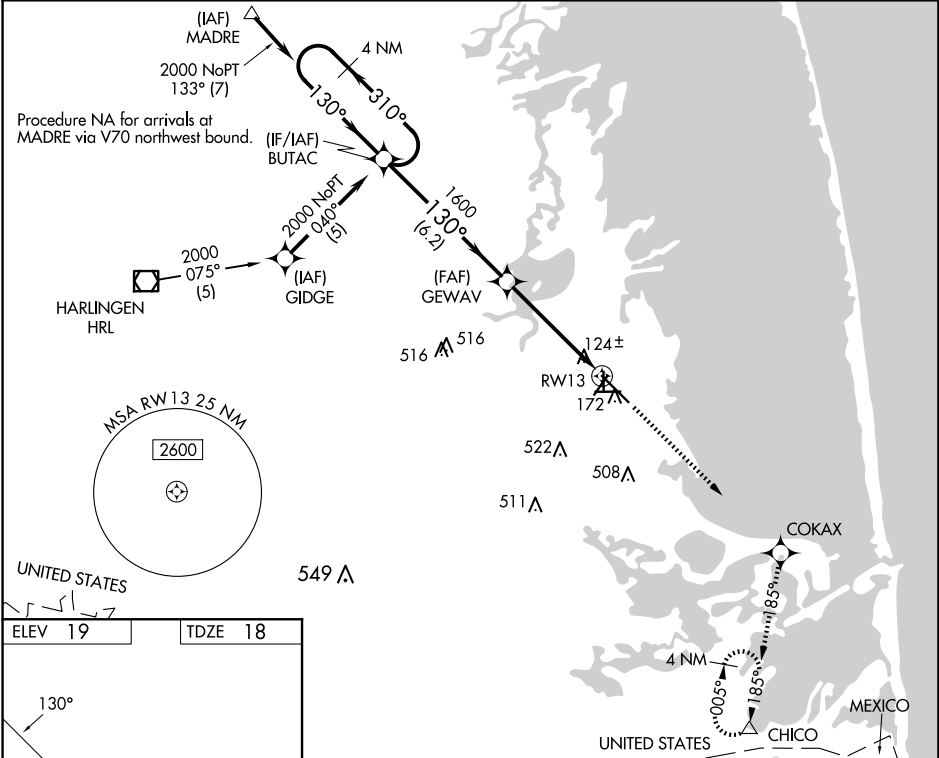
**RNAV (GPS) RWY 13**  
CAMERON COUNTY (PIL)

RNP APCH.

Baro-VNAV NA when using Brownsville altimeter setting. For uncompensated Baro-VNAV systems, LNAV/VNAV NA below -15°C or above 54°C. VDP NA when using Brownsville altimeter setting. When local altimeter setting not received, use Brownsville altimeter setting and increase all DA 38 feet and all MDA 40 feet, increase LPV all Cts, LNAV Cat C, and Circling Cat C visibility ¼ mile. Circling Rwy's 3, 8, 17, 21, 26, 35 NA at night.

MISSED APPROACH:  
Climb to 3000 direct COKAX and via 185° track to CHICO and hold.

ASOS <b>118.525</b>	VALLEY APP CON <b>119.5 257.6</b>	CLNC DEL <b>119.2</b>	UNICOM <b>122.8</b> (CTAF)
------------------------	--------------------------------------	--------------------------	-------------------------------



4 NM Holding Pattern BUTAC				3000	COKAX	CHICO
2000 ← 310° 130° →				↑	✱	△
GP 3.00° TCH 40				tr 185°		
VGSI and RNAV glidepath not coincident (VGSI Angle 2.00° TCH 27).				*2.1 NM to RWY13		
				*LNAV only.		
				6.2 NM 2.7 NM 2.1 NM		
CATEGORY	A	B	C	D		
LPV DA	376-1¼	358 (400-1¼)		NA		
LNAV/VNAV DA	424-1½	406 (500-1½)		NA		
LNAV MDA	480-1	462 (500-1)	480-1¼	NA		
			462 (500-1¼)			
CIRCLING	540-1	620-1	840-2½	NA		
	521 (600-1)	601 (700-1)	821 (900-2½)			

SC-3, 07 AUG 2025 to 04 SEP 2025

SC-3, 07 AUG 2025 to 04 SEP 2025