

WAAS CH 53508 W35A	APP CRS 354°	Rwy Idg 5399 TDZE 1984 Apt Elev 2013
--	------------------------	---

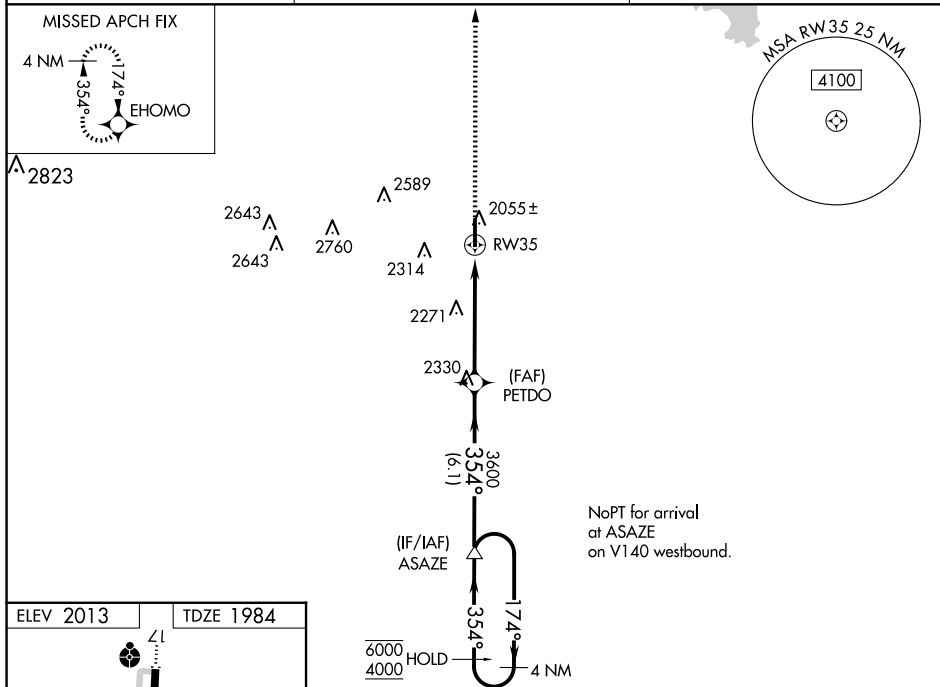
RNAV (GPS) RWY 35
ELK CITY RGNL BUSINESS (ELK)

RNP APCH.

- T** Rwy 35 helicopter visibility reduction below $\frac{3}{4}$ SM NA.
A For uncompensated Baro-VNAV systems, LNAV/VNAV NA below -18°C or above 54°C.

MISSED APPROACH: Climb to 4000 direct EHOMO and hold.

AWOS-3 118.225	FORT WORTH CENTER 128.4 269.37	UNICOM 122.8 (CTAF) 0
--------------------------	--	---------------------------------



CATEGORY	A	B	C	D
LPV DA		2234- $\frac{7}{8}$	250 (300-%)	
LNAV/ VNAV	DA	2377-1 $\frac{3}{8}$	393 (400-1 $\frac{3}{8}$)	
LNAV MDA	2640-1	656 (700-1)	2640-1 $\frac{7}{8}$	656 (700-1 $\frac{7}{8}$)
C CIRCLING	2640-1 627 (700-1)	2680-1 667 (700-1)	2680-1 $\frac{3}{4}$ 667 (700-1 $\frac{3}{4}$)	2940-3 927 (1000-3)