

WAAS CH <b>82408</b> <b>W17A</b>	APP CRS <b>174°</b>	Rwy Idg TDZE <b>2013</b> Apt Elev <b>2013</b>
--	------------------------	---

RNAV (GPS) RWY 17

ELK CITY RGNL BUSINESS (ELK)

RNP APCH - GPS.

▼

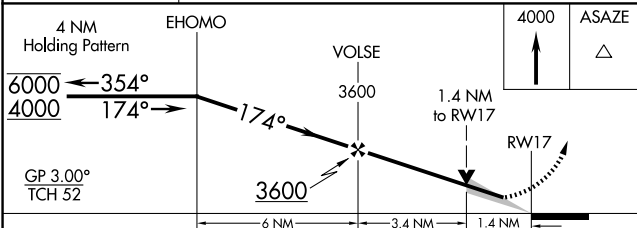
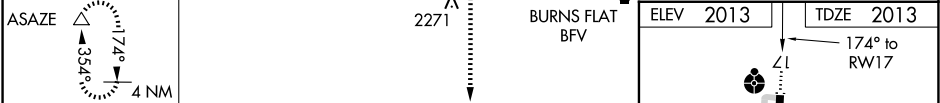
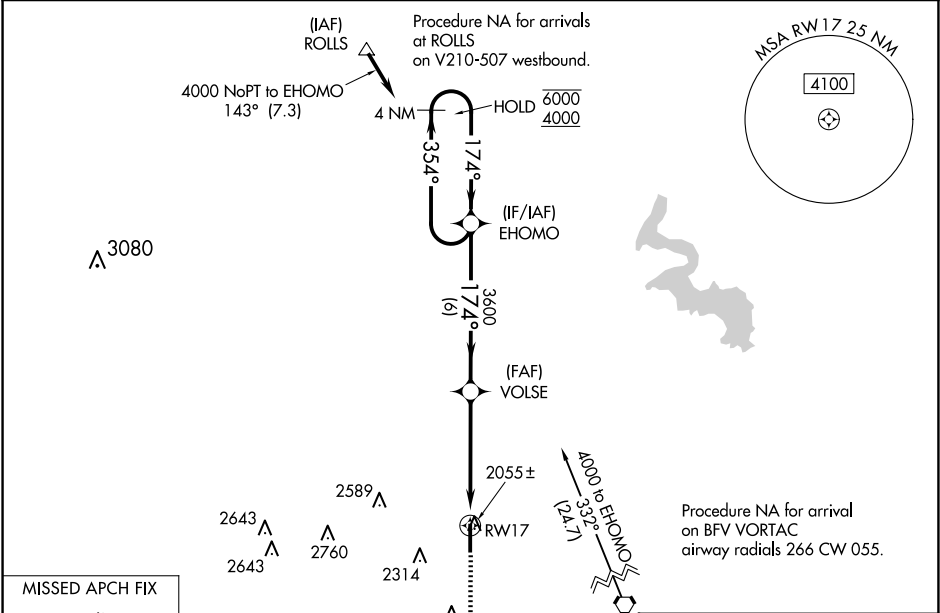
▲

For uncompensated Baro-VNAV systems, LNAV/VNAV NA below -18°C or above 54°C. Inop table does not apply to LPV all Cats and LNAV Cats C/D. For inop ALS increase LNAV/VNAV Cats A/B visibility to ½ SM.

ODALS  
⬮

MISSED APPROACH: Climb to 4000 direct ASAZE and hold.

AWOS-3 <b>118.225</b>	FORT WORTH CENTER <b>128.4 269.37</b>	UNICOM <b>122.8 (CTAF) 0</b>
--------------------------	--	---------------------------------



CATEGORY	A	B	C	D
LPV DA		2263-¾	250 (300-¾)	
LNAV/VNAV DA		2305-¾	292 (300-¾)	
LNAV MDA	2520-¾ 507 (600-¾)		2520-1¾ 507 (600-1¾)	
CIRCLING	2520-1 507 (600-1)	2680-1 667 (700-1)	2680-1¾ 667 (700-1¾)	2940-3 927 (1000-3)

