

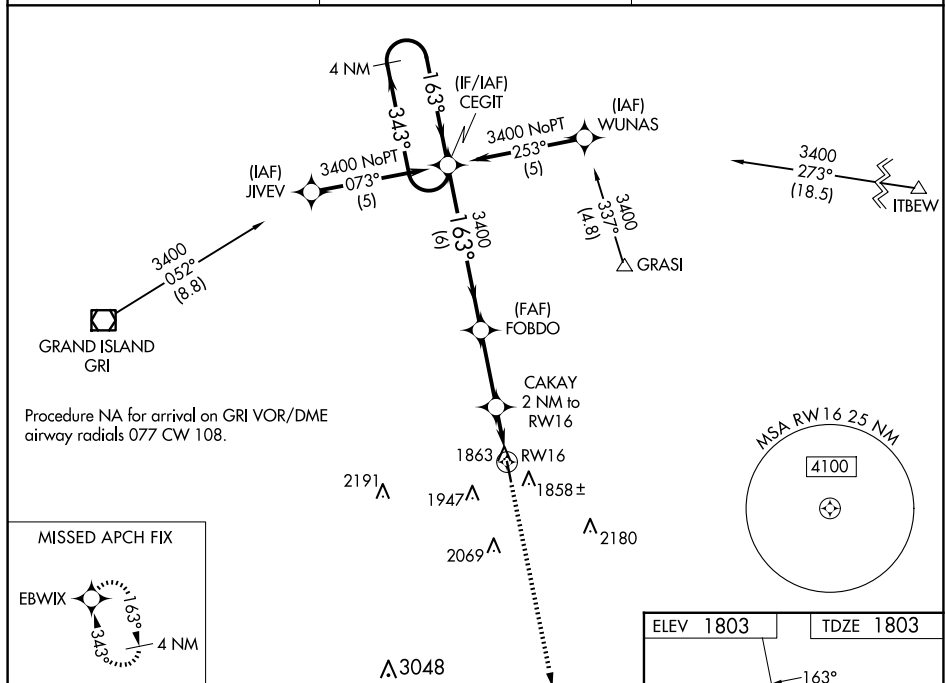
WAAS CH 77809 W16A	APP CRS 163°	Rwy Idg 4301 TDZE 1803 Apt Elev 1803
--	------------------------	---

RNAV (GPS) RWY 16
AURORA MUNI/AL POTTER FLD (AUH)

- T** Baro-VNAV NA when using Grand Island altimeter setting. For uncompensated Baro-VNAV systems, **A** LNAV/VNAV NA below -18°C (0°F) or above 54°C (130°F). DME/DME RNP-0.3 NA. Visibility reduction by helicopters NA. When local altimeter setting not received, use Grand Island altimeter setting and increase all DA 41 feet and all MDA 60 feet and LPV all Cats visibility ¼ mile. VDP NA when using Grand Island altimeter setting.

MISSED APPROACH:
Climb to 3400 direct
EBWIX and hold.

AWOS-3 121.225	MINNEAPOLIS CENTER 119.4 278.8	UNICOM 122.8 (CTAF) 0
--------------------------	--	--



CAGL VORTAC

4 NM Holding Pattern

CEGIT

FOBDO

CAKAY 2 NM to RW16

***1 NM to RW16**

***INAV only**

RW16

GP 3.00° TCH 40

3400

343°

163°

3400

***2480**

6 NM

2.8 NM

1 NM

1 NM

CATEGORY	A	B	C	D
LPV DA	2102-1	299 (300-1)		NA
LNNAV/VNAV	DA	2133-1¼ 330 (400-1¼)		NA
LNNAV MDA		2160-1 357 (400-1)		NA
CIRCLING	2300-1 497 (500-1)	2340-1 537 (600-1)		NA

