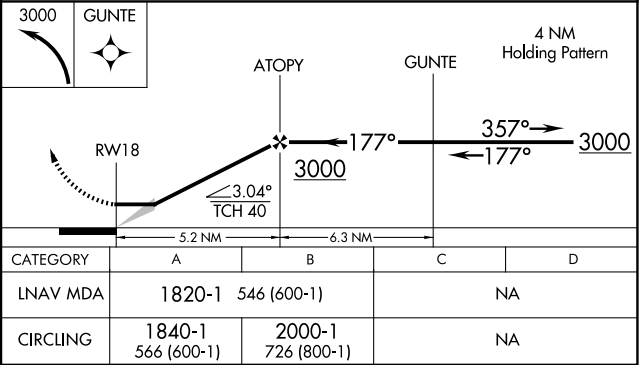
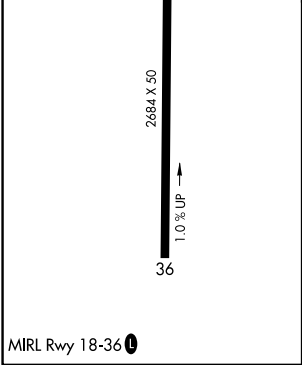
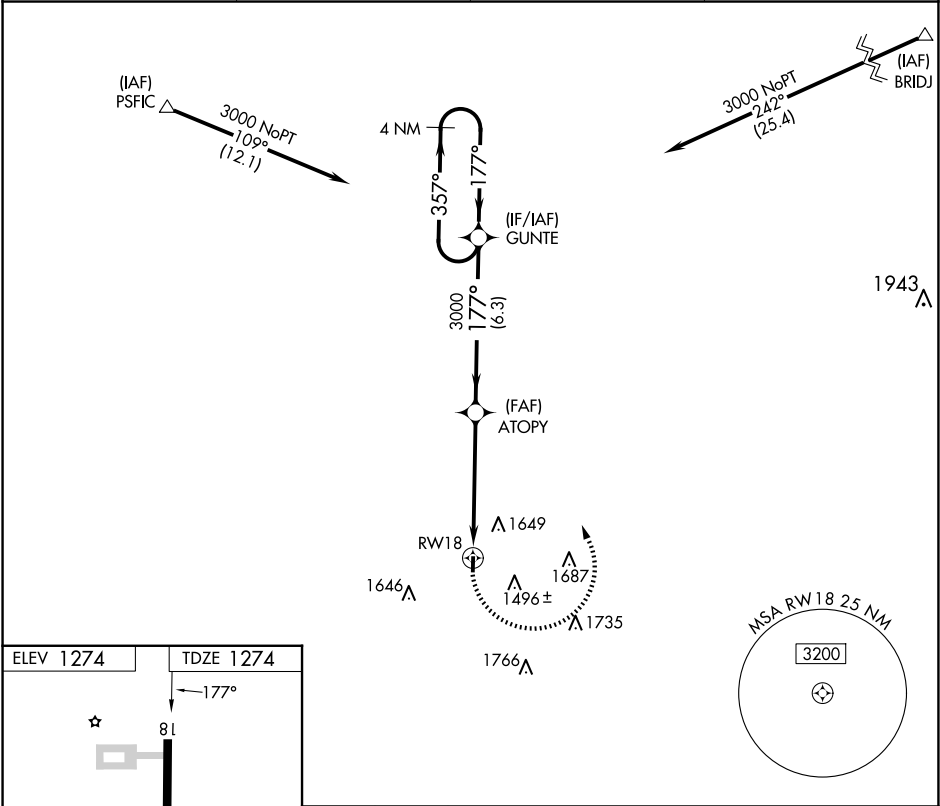


APP CRS	Rwy Idg	2684
177°	TDZE	1274
	Apt Elev	1274

RNAV (GPS) RWY 18

CORNING MUNI (CRZ)

RNP APCH.		MISSED APPROACH: Climbing left turn to 3000 direct GUNTE and hold.	
▼ Use Creston altimeter setting; when not received, use ▲ NA Clarinda altimeter setting and increase all MDAs 60 feet.			
CSQ AWOS-3 124.75	MINNEAPOLIS CENTER 119.6 290.4	CTAF 122.9	122.8 0



NC-3, 07 AUG 2025 to 04 SEP 2025

NC-3, 07 AUG 2025 to 04 SEP 2025