

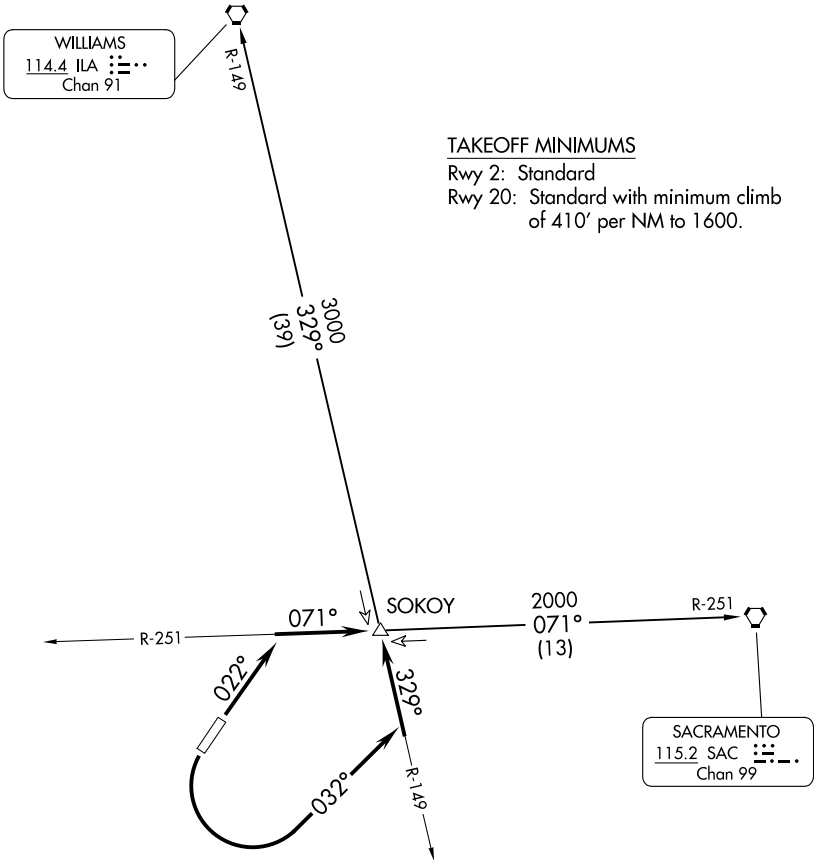
(SOKOY3.SOKOY) 23334
SOKOY THREE DEPARTURE

AL-6094 (FAA)

NUT TREE (VCB)
VACAVILLE, CALIFORNIA

TRAVIS DEP CON
128.4 281.45

TOP ALTITUDE:
ASSIGNED BY ATC



TAKEOFF MINIMUMS
Rwy 2: Standard
Rwy 20: Standard with minimum climb
of 410' per NM to 1600.

NOTE: Chart not to scale.

DEPARTURE ROUTE DESCRIPTION

- TAKEOFF RUNWAY 2: Climb via heading 022°, intercept SAC R-251 to SOKOY/ SAC 13 DME.
- TAKEOFF RUNWAY 20: Turn left heading 032°, intercept ILA R-149 to SOKOY/ ILA 39 DME.
- SACRAMENTO TRANSITION (SOKOY3.SAC): From over SOKOY on SAC R-251 to SAC VORTAC.
- WILLIAMS TRANSITION (SOKOY3.ILA): From over SOKOY on ILA R-149 to ILA VORTAC.