

VOR/DME MCW
114.9
Chan **96**

APP CRS
297°

Rwy Idg
TDZE
Apt Elev **1229**

N/A
N/A
1229

VOR-A

FOREST CITY MUNI/TRIMBLE FLD (FXY)

DME required.

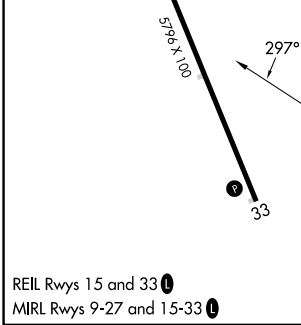
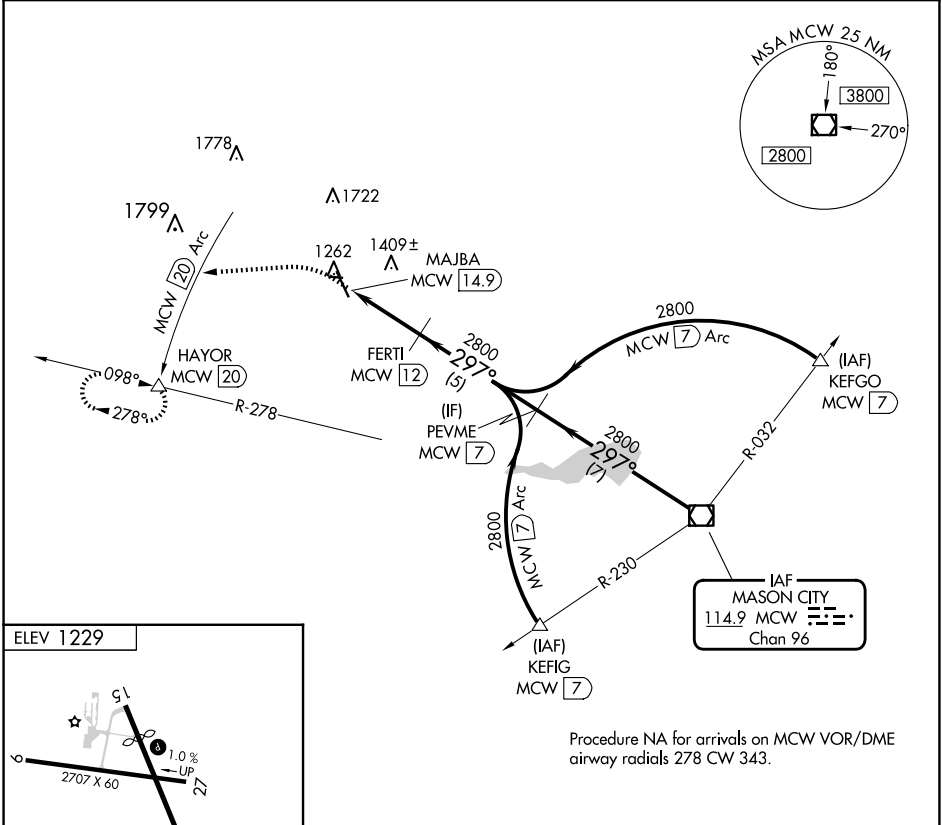
▼

⚠

When local altimeter setting not received use Mason City altimeter setting and increase all MDA 40 feet. Circling to Rwy 9, 27 33 NA at night.

MISSED APPROACH: Climb to 3000 on heading 260° to MCW 20 DME Arc and on MCW 20 DME Arc counterclockwise to HAYOR/20 DME and hold.

AWOS-3 123.925	MINNEAPOLIS CENTER 127.3 257.675	UNICOM 122.8 (CTAF) 0
--------------------------	--	---------------------------------



3000	MCW 20 Arc counter-clockwise	HAYOR	FERTI MCW 12	PEVME MCW 7	MCW VOR/DME
2800	2800	2800	2800	2800	2800
2.9 NM		5 NM		7 NM	
CATEGORY	A	B	C	D	
CIRCLING	1680-1 451 (500-1)	1760-1 531 (600-1)	NA		