

WAAS CH 78016 W33A	APP CRS 332°	Rwy Idg 5796 TDZE 1203 Apt Elev 1229
--	------------------------	---

RNAV (GPS) RWY 33

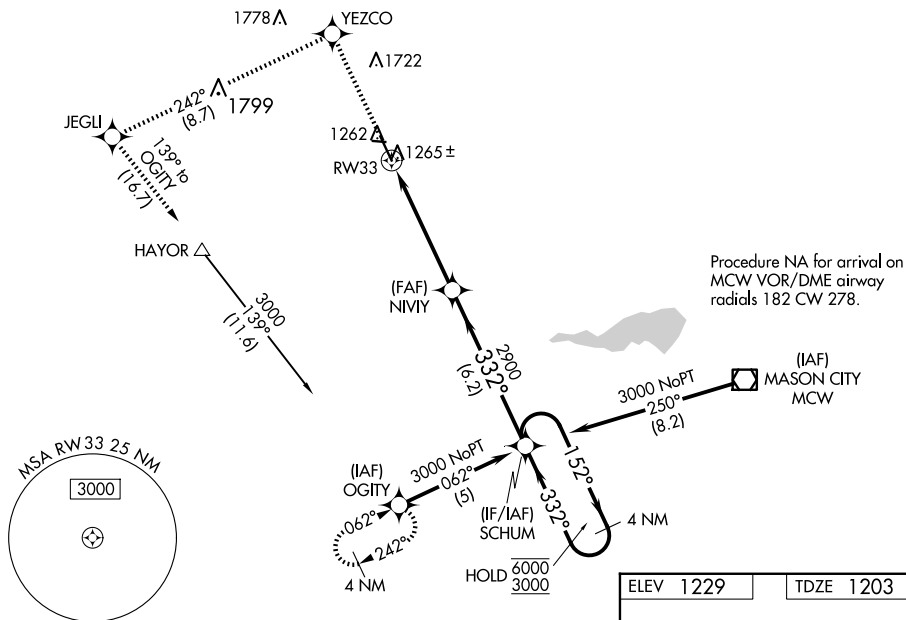
FOREST CITY MUNI/TRIMBLE FLD (FXY)

RNP APCH - GPS.

T Rwy 33 helicopter visibility reduction below 1 SM NA.
A For uncompensated Baro-VNAV systems, LNAV/VNAV NA below -17°C or above 54°C. Straight-in Rwy 33 NA at night, Circling Rwy 9, 27, 33 NA at night.

MISSED APPROACH: Climb to 3000 direct YEZCO and left turn on track 242° to JEGU and left turn on track 139° to OGITY and hold.

AWOS-3 123.925	MINNEAPOLIS CENTER 127.3 257.675	UNICOM 122.8 (CTAF) 0
--------------------------	--	---------------------------------

[illegible]