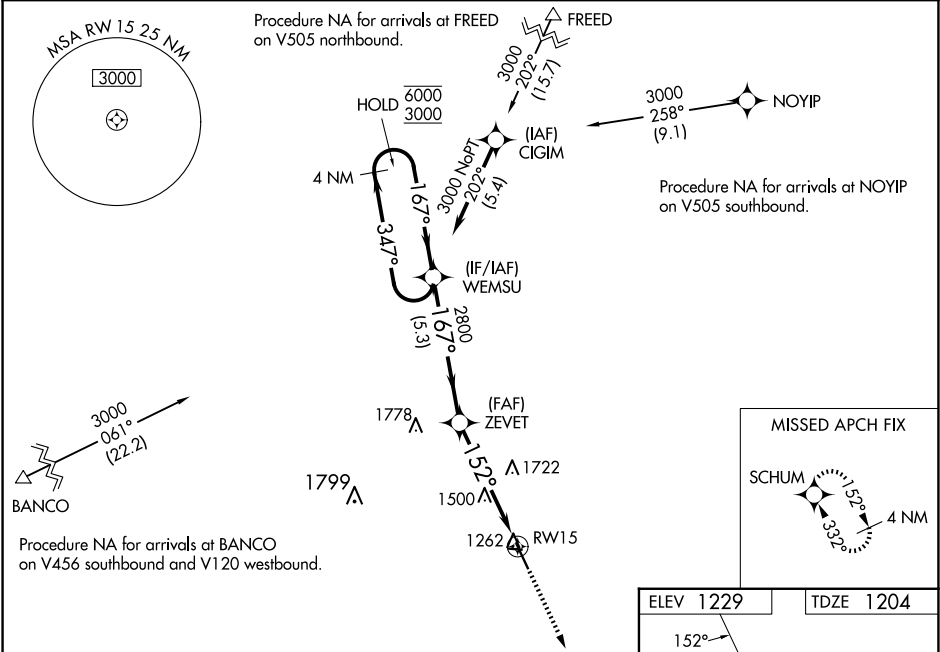


| | | |
|--|------------------------|---|
| WAAS CH 90428 W15A | APP CRS 152° | Rwy Idg TDZE 1204 Apt Elev 1229 |
|--|------------------------|---|

RNAV (GPS) RWY 15

FOREST CITY MUNI/TRIMBLE FLD (FXY)

| | | |
|---|--|--|
| RNP APCH. <div><div></div><div></div></div> <div>Circling to Rwy 9, 27 and 33 NA at night. For uncompensated Baro-VNAV systems, LNAV/VNAV NA below -29°C or above 54°C. When local altimeter setting not received, use Mason City altimeter setting and increase LPV DA to 1488 feet; LNAV/VNAV DA to 1516 feet; increase all MDA 40 feet. VDP and Baro-VNAV NA when using Mason City altimeter setting.</div> | | MISSED APPROACH: Climb to 3000 direct to SCHUM and hold. |
| AWOS-3 123.925 | MINNEAPOLIS CENTER 127.3 257.675 | UNICOM 122.8 (CTAF) 0 |



| | | | | | |
|----------------------------|--------|--|-------------------------|-------------------------|-------|
| 4 NM Holding Pattern WEMSU | | VGSI and RNAV glidepath not coincident (VGSI Angle 3.00/TCH 28). | | 3000 | SCHUM |
| 6000 ← 347° 3000 ← 167° | | ZEVET | | * LNAV only. | |
| GP 3.00° TCH 40 | | 2800 | | * 1.7 NM to RW15 | |
| | | 5.3 NM | | RW15 | |
| | | 3.2 NM | | | |
| | | 1.7 NM | | | |
| CATEGORY | A | B | C | D | |
| LPV DA | | 1454-1 | 250 (300-1) | | |
| LNAV/VNAV DA | | 1482-1 | 278 (300-1) | | |
| LNAV MDA | 1760-1 | 556 (600-1) | 1760-1½ | 556 (600-1½) | |
| CIRCLING | 1760-1 | 531 (600-1) | 2040-2½ 811 (900-2½) | 2040-2¾ 811 (900-2¾) | |

