

LOC I-DSY 110.1 Chan 38	APP CRS 011°	Rwy Idg TDZE 253 Apt Elev 265
---	------------------------	---

ILS or LOC RWY 1
SEARCY RGNL (SRC)

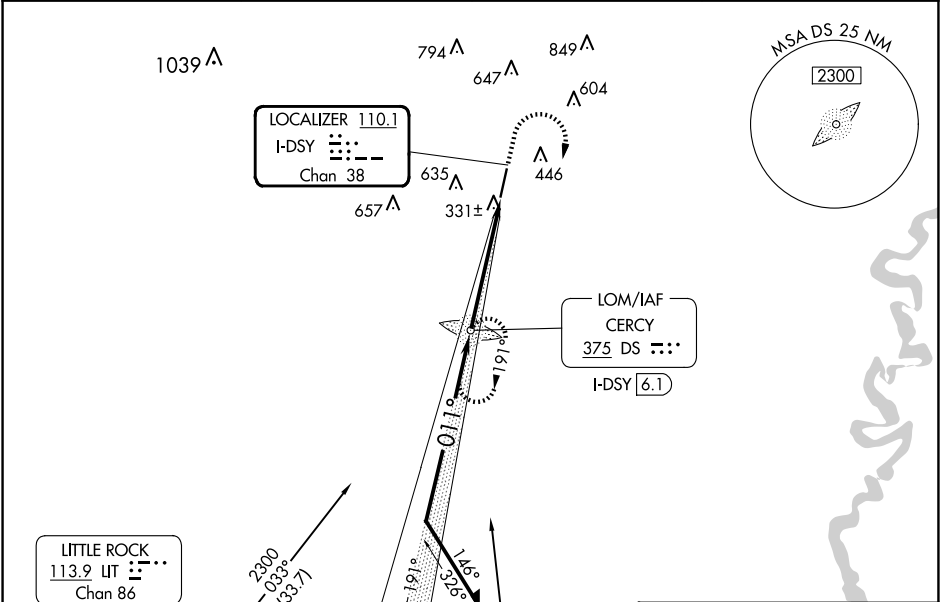
ADF required.

⚠ Circling NA for Cats B and C west of Rwy 1-19. VDP NA when using Bill and Hillary Clinton Nil/Adams Fld altimeter setting. When local altimeter setting not received, use Bill and Hillary Clinton Nil/Adams Fld altimeter setting: increase ILS DA to 542 feet; increase all MDAs 100 feet and S-LOC 1 Cat C and Circling Cat C visibility ¼ SM. For inop ALS, increase S-LOC 1 Cat C visibility to 1 SM.

MALSR

MISSED APPROACH: Climb to 800 then climbing right turn to 2300 direct CERCY LOM and hold, continue climb-in-hold to 2300.

AWOS-3PT 128.325	LITTLE ROCK APP CON 119.75 291.775	CLNC DEL 119.75	UNICOM 122.7 (CTAF)
----------------------------	--	---------------------------	-------------------------------



ELEV 265 61 TDZE 253

REIL Rwy 19

MIRL Rwy 1-19

Diagram showing the approach path with altitudes and distances.

Remain within 10 NM

DS LOM CERCY I-DSY 6.1

2300 191° 011° 1900

GS 3.00° TCH 54

VGSI and ILS glidepath not coincident (VGSI Angle 3.00/TCH 57).

4 NM 1 NM

800 2300 DS

I-DSY 2.1 I-DSY 1.2

CATEGORY	A	B	C	D
S-ILS 1	453-1/2	200 (200-1/2)		NA
S-LOC 1	600-1/2	347 (400-1/2)	600-5/8 347 (400-5/8)	NA
CIRCLING	760-1	495 (500-1)	780-1/2 515 (600-1/2)	NA

FAF to MAP 4.9 NM

Knots	60	90	120	150	180
Min:Sec	4:54	3:16	2:27	1:58	1:38

SC-1, 07 AUG 2025 to 04 SEP 2025

SC-1, 07 AUG 2025 to 04 SEP 2025