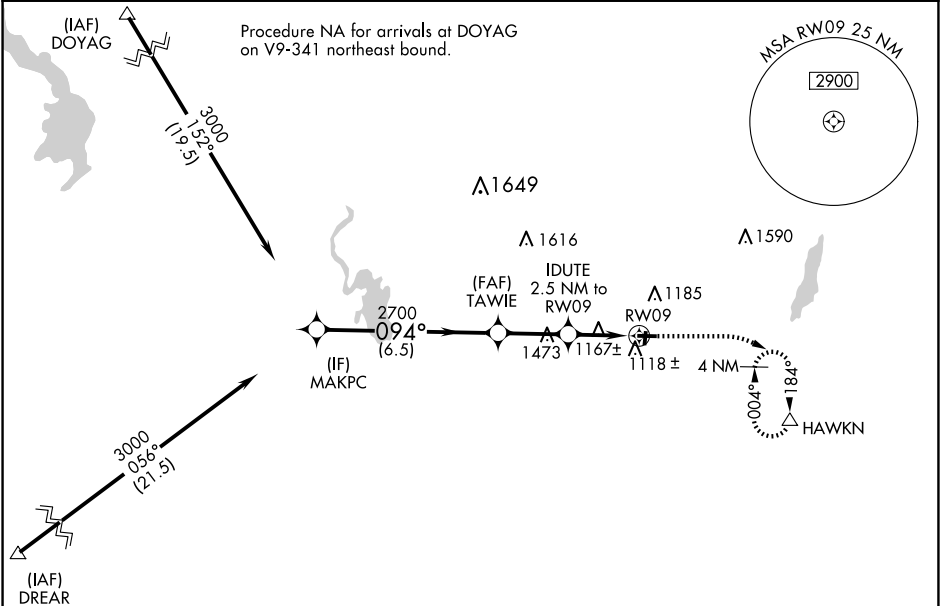


WAAS CH 42743 W09A	APP CRS 094°	Rwy Idg TDZE Apt Elev	3401 1068 1070
--	------------------------	-----------------------------	---

RNAV (GPS) RWY 9
HARTFORD MUNI (HXF')

RNP APCH. Circling NA to Rwys 18 and 36. Baro-VNAV NA. Use Westbend altimeter setting.		MISSED APPROACH: Climb to 1700 then climbing right turn to 3000 direct HAWKN and hold, continue climb-in-hold to 3000.
ETB AWOS-3 120.0	MILWAUKEE APP CON 125.35 307.0	UNICOM 123.0 (CTAF) 0



ELEV 1070		TDZE 1068	
MAKPC		TAWIE	
3000		2700	
GP 3.00° TCH 40		IDUTE 2.5 NM to RWY 09	
6.5 NM		2.5 NM	
2700		RWY 09	
*1900		*LNAV only.	
CATEGORY	A	B	C
LPV DA	1372-7/8	304 (400-7/8)	NA
LNAV/VNAV DA	1372-7/8	304 (400-7/8)	NA
LNAV MDA	1480-1	412 (500-1)	NA
CIRCLING	1560-1	490 (500-1)	NA

