

WAAS CH 86943 W27A	APP CRS 274°	Rwy Idg 3401 TDZE 1070 Apt Elev 1070
--	------------------------	--

RNAV (GPS) RWY 27

RNP APCH.



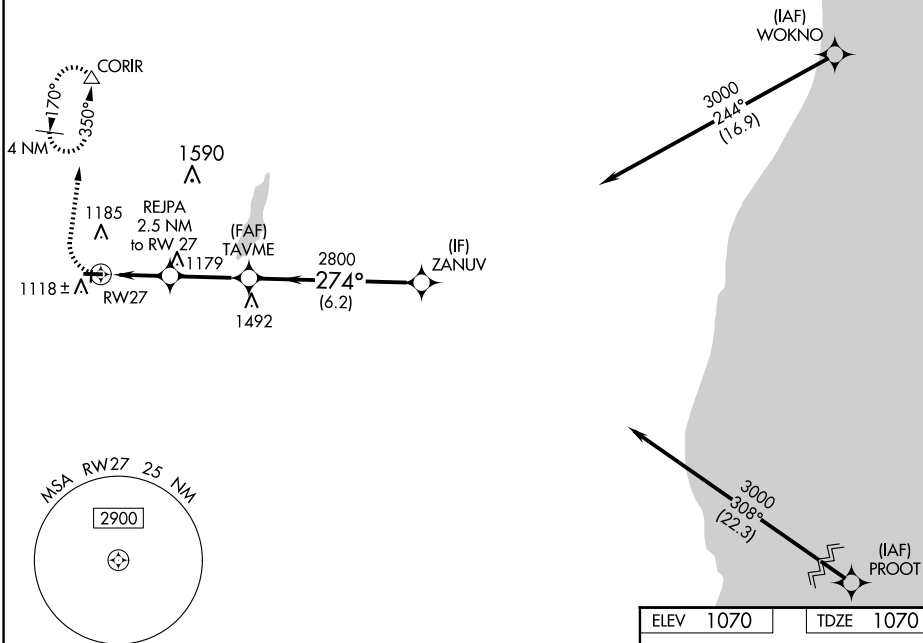
Circling NA to Rwy 18 and 36.
Rwy 27 helicopter visibility reduction below $\frac{3}{4}$ SM NA.
Baro-VNAV NA. Use West Bend altimeter setting.

MISSED APPROACH: Climb to 1700 then climbing right turn to 3000 direct CORIR and hold, continue climb-in-hold to 3000.

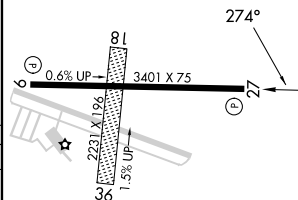
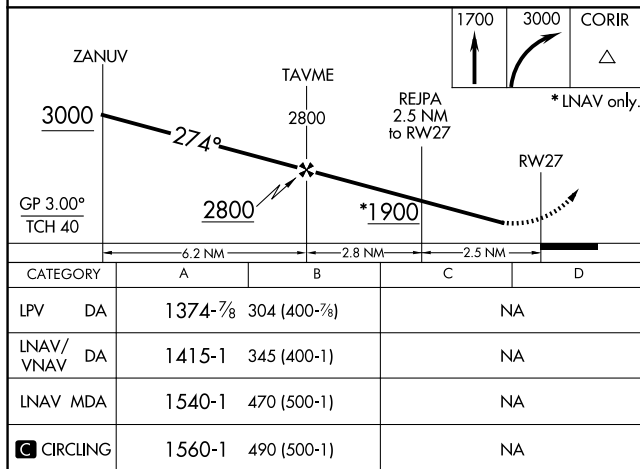
ETB AWOS-3
120.0

MILWAUKEE APP CON
125.35 307.0

UNICOM
123.0 (CTAF) **L**



ELEV	1070		TDZE	1070
------	------	--	------	------



MIRL Rwy 9-27 **L**
REIL Rwy 9 and 27 **L**