

APP CRS 173°	Rwy Ldg	5001
	TDZE	892
	Apt Elev	892

RNAV (GPS) RWY 17

DICKSON MUNI (M02)

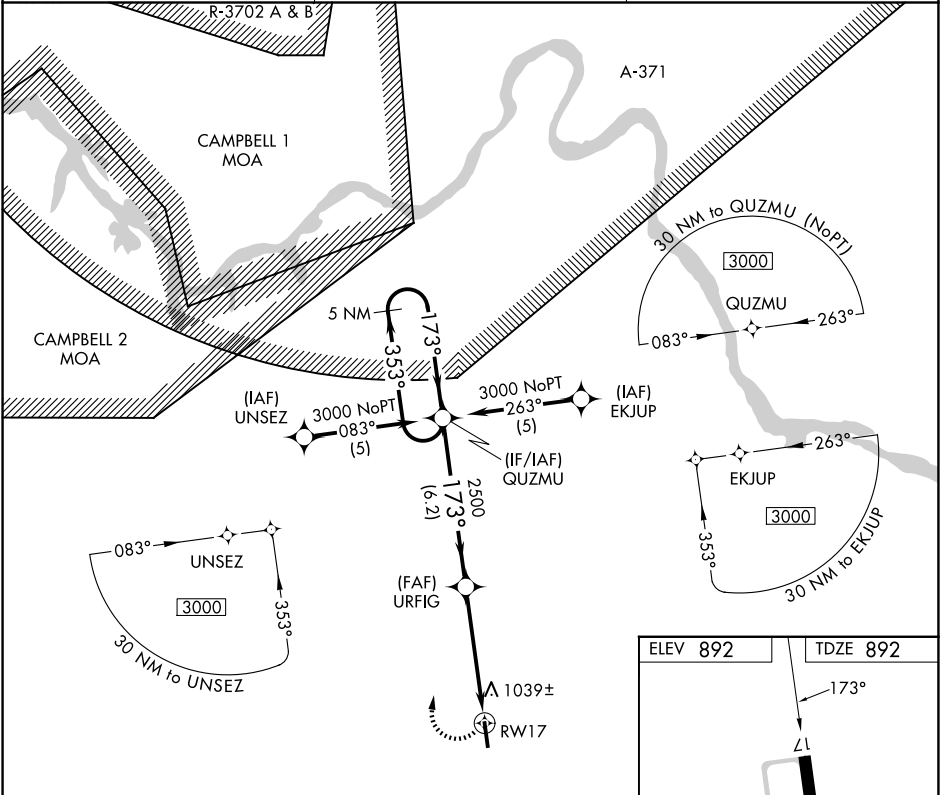
▼

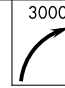


NA

Night Landing: Rwy 35 NA. DME/DME RNP-0.3 NA. Helicopter visibility reduction below ¼ SM NA. When local altimeter setting not received, use Nashville Intl altimeter setting and increase all MDA 140 feet and increase LNAV Cat C and Circling Cat B visibility ¼ mile and LNAV Cat D and Circling Cat C/D ½ mile.

MISSED APPROACH:
Climbing right turn to 3000 direct QUZMU and hold.

AWOS-3 123.875	NASHVILLE APP CON 119.35 372.0	UNICOM 122.8 (CTAF)
-------------------	-----------------------------------	------------------------



5 NM Holding Pattern		QUZMU						
3000		URFIG		2500		RW17		
← 353°		173° →		173°				
Visual Segment - Obstacles.		6.2 NM		4.9 NM				
CATEGORY	A		B		C		D	
LNAV MDA	1300-1		408 (500-1)		1300-1½		408 (500-1½)	
CIRCLING	1420-1 528 (600-1)		1560-1 668 (700-1)		1560-1¾ 668 (700-1¾)		1560-2 668 (700-2)	

