

WAAS CH <b>99524</b> <b>W30A</b>	APP CRS <b>301°</b>	Rwy Idg TDZE <b>1549</b> Apt Elev <b>1549</b>
--	------------------------	---

RNAV (GPS) RWY 30

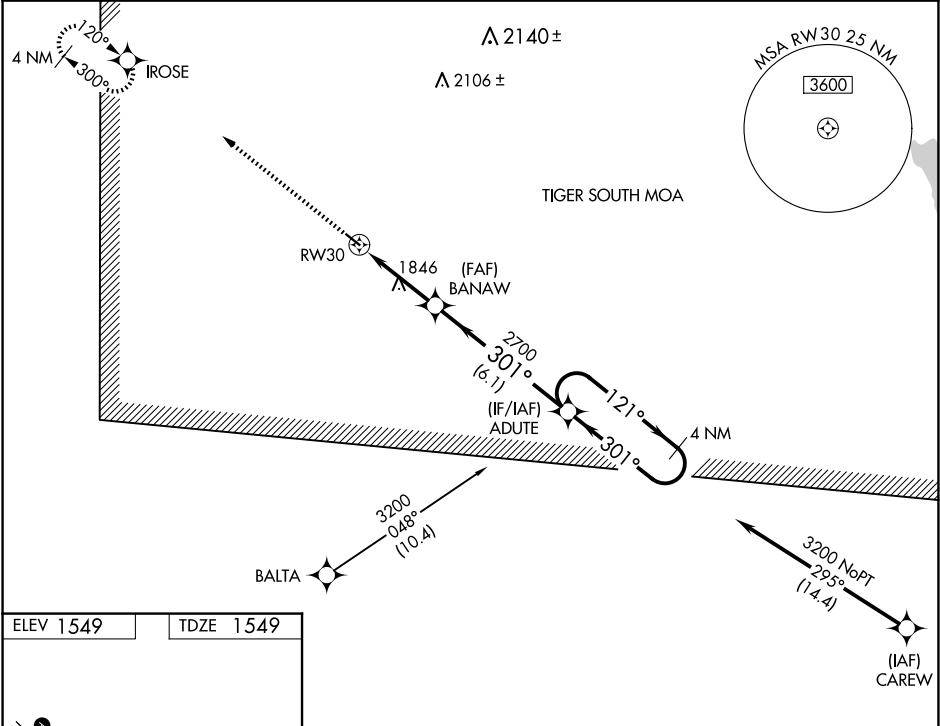
RUGBY MUNI (RUG)

⚠

DME/DME RNP-0.3 NA. When local altimeter setting not received, use Devils Lake altimeter setting and increase all MDA 140 feet, increase LP and LNAV Cats B/C visibility ¼ mile, and Circling Cat B visibility ¼ mile and Cat C visibility ½ mile. Rwy 30 helicopter visibility reduction below ¾ SM NA.

MISSED APPROACH: Climb to 3200 direct IROSE and hold.

AWOS-3 <b>118.475</b>	MINNEAPOLIS CENTER <b>127.6 279.6</b>	UNICOM <b>122.8 (CTAF) 0</b>
--------------------------	--	---------------------------------



ELEV 1549

TDZE 1549

REIL Rwy 12 and 30 0

MIRL Rwy 12-30 0

3200 IROSE		Visual Segment - Obstacle.		ADUTE	
↑		BANAW		4 NM Holding Pattern	
RW30		2700		121° → 3200	
3.5 NM		6.1 NM		← 301°	
CATEGORY	A	B	C	D	
LP MDA	2160-1	611 (700-1)	2160-1¾ 611 (700-1¾)	NA	
LNAV MDA	2160-1	611 (700-1)	2160-1¾ 611 (700-1¾)	NA	
CIRCLING	2160-1	611 (700-1)	2160-1¾ 611 (700-1¾)	NA	

NC-1, 07 AUG 2025 to 04 SEP 2025

NC-1, 07 AUG 2025 to 04 SEP 2025