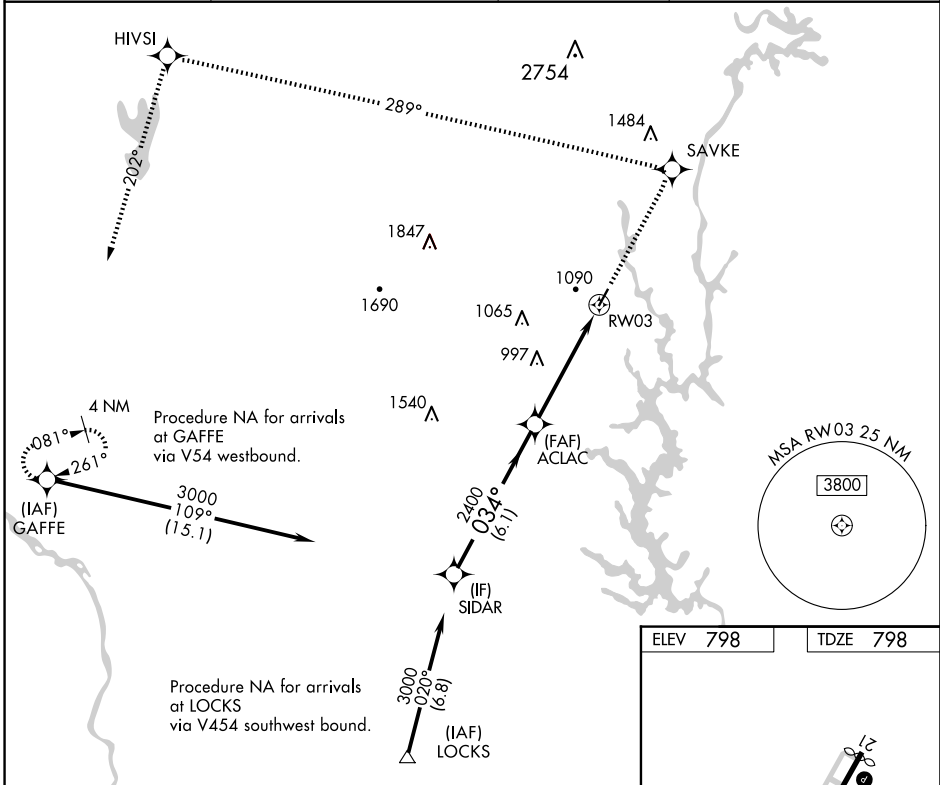


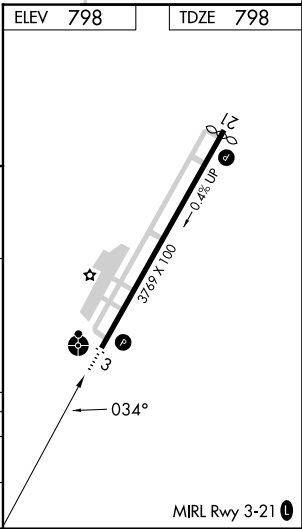
WAAS CH 90302 W03A	APP CRS 034°	Rwy Idg TDZE Apt Elev	3769 798 798
--	------------------------	-----------------------------	---

RNAV (GPS) RWY 3
GASTONIA MUNI (AKH)

RNP APCH. ▼ If local altimeter setting not received, use Charlotte Douglas Intl altimeter setting and increase all DAs/MDAs 40 feet. Inoperative table does not apply.		ODALS ● ⋮	MISSED APPROACH: Climb to 3200 direct SAVKE and via 289° track to HIVSI and 202° track to GAFFE and hold.
ASOS 135.725	CHARLOTTE APP CON 120.05 257.2	CLNC DEL 127.2	UNICOM 123.0 (CTAF) 0



VGSI and RNAV glidepath not coincident (VGSI Angle 3.00/TCH 29).				3200	SAVKE	HIVSI	GAFFE
Procedure Turn NA				↑	tr 289°	tr 202°	
GP 3.00° TCH 40				3000	034°	2400	
				6.1 NM	4.8 NM		
CATEGORY	A	B	C	D			
LPV DA	1118-1¼	320 (400-1¼)		NA			
LNAV MDA	1440-1	642 (700-1)	1440-1¾ 642 (700-1¾)	NA			



SE-2, 07 AUG 2025 to 04 SEP 2025

SE-2, 07 AUG 2025 to 04 SEP 2025