

WAAS CH <b>82435</b> <b>W13A</b>	APP CRS <b>128°</b>	Rwy Idg TDZE Apt Elev	<b>6503</b> <b>658</b> <b>658</b>
--	------------------------	-----------------------------	---

RNAV (GPS) RWY 13

NEW BRAUNFELS NTL (BAZ)

RNP APCH

▼

▲

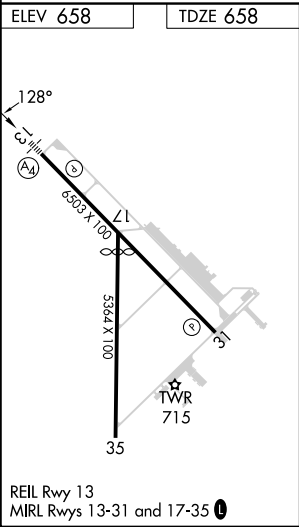
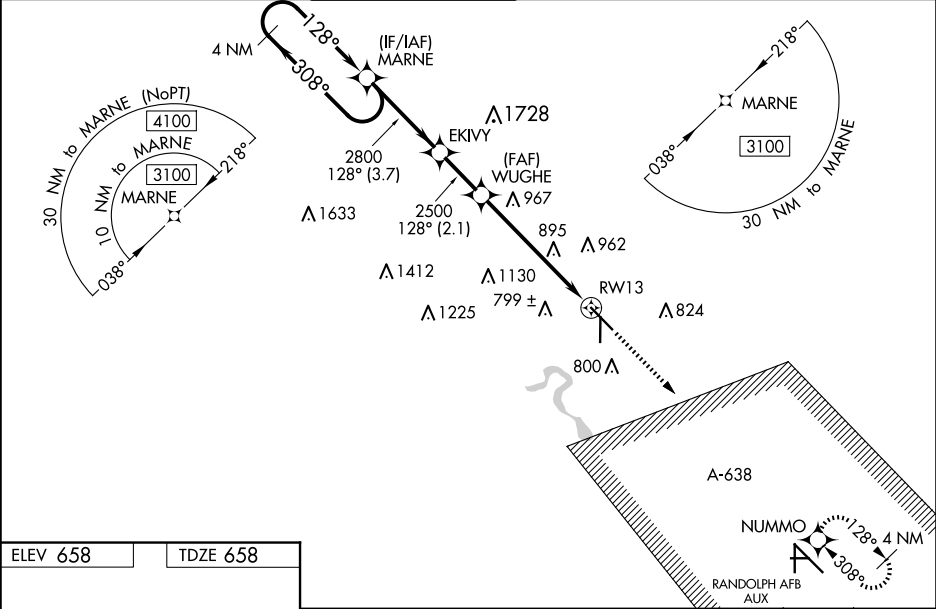
When local altimeter setting not received, use San Marcos Rgnl altimeter setting; increase LPV DA to 951 feet, LNAV/VNAV DA to 1169 feet; increase all MDAs 60 feet and visibility LNAV and Circling Cat C/D ¼ SM. For uncompensated Baro-VNAV systems, LNAV/VNAV NA below -6°C (22°F) or above 54°C (130°F). Baro-VNAV and VDP NA when using San Marcos altimeter setting. For inop ALS, increase LNAV/VNAV visibility to 1 ½ SM. Inop table does not apply to LPV all Cats and LNAV Cats A/B. For inop ALS when using San Marcos Rgnl altimeter setting, increase LPV all Cats visibility to ¾ SM and LNAV/VNAV all Cats visibility to 1 ¾ SM. When using San Marcos Rgnl altimeter setting, inop table does not apply to LNAV Cats A/B.

MALS

A4

MISSED APPROACH:  
Climb to 3500 direct NUMMO and hold, continue climb-in-hold to 3500.

ATIS	SAN ANTONIO APP CON	NEW BRAUNFELS TOWER*	GND CON	CINC DEL	CINC DEL	UNICOM
119.325	124.45 335.625	127.05 (CTAF) 285.4	120.175	134.75	134.75 (When twr closed)	122.7



<div>4 NM Holding Pattern</div> <div>MARNE</div> <div>3100 ← 308° 128° → 128°</div> <div>GP 3.00° TCH 50</div>					<div>EKIVY</div> <div>WUGHE</div> <div>2500</div> <div>*1.6 NM to RW13</div> <div>RW13</div> <div>*LNAV only.</div>	
<div>3.7 NM</div> <div>2.1 NM</div> <div>4 NM</div> <div>1.6 NM</div>						
CATEGORY	A		B	C	D	
LPV DA	908-¾		250 (300-¾)			
LNAV/VNAV DA	1126-1¼		468 (500-1¼)			
LNAV MDA	1220-1	562 (600-1)		1220-1¾	562 (600-1¾)	
CIRCLING	1220-1 562 (600-1)	1240-1 582 (600-1)	1280-1¾ 622 (700-1¾)	1320-2 662 (700-2)		