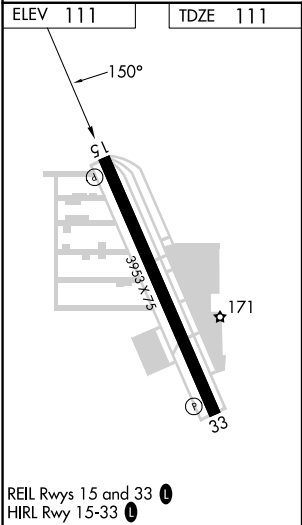
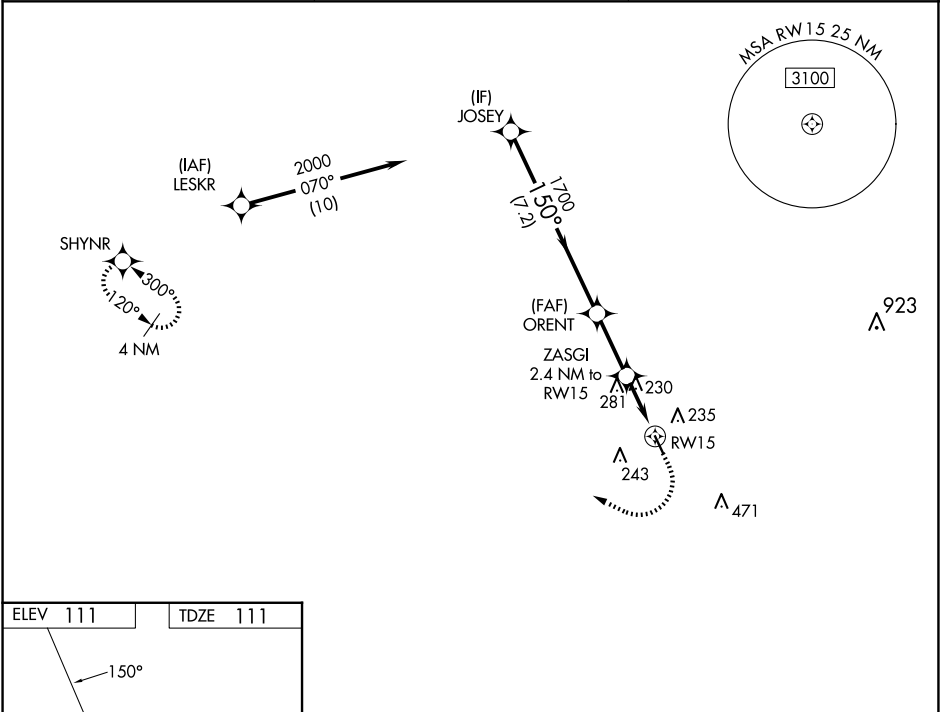


WAAS CH 40429 W15A	APP CRS 150°	Rwy Idg 3953 TDZE 111 Apt Elev 111
----------------------------------------	------------------------	---------------------------------------------------------------

RNAV (GPS) RWY 15
WEST HOUSTON (IWS)

RNP APCH.	MISSED APPROACH: Climb to 600 then climbing right turn to 2000 direct SHYNR and hold.
<div><div></div><div>Procedure NA at night. Rwy 15 helicopter visibility reduction below 1 SM NA. Use George Bush Intcnl/Houston altimeter setting.</div></div>	

HOUSTON APP CON 123.8 257.7	CLNC DEL 121.15	UNICOM 123.05 (CTAF) 0
---------------------------------------	---------------------------	----------------------------------



VGSI and descent angles not coincident (VGSI Angle 3.70/TCH 43).				600	2000	SHYNR
JOSEY						
2000						
150°						
ORENT						
1700						
3.00° TCH 45						
ZASGI 2.4 NM to RWY 15						
RWY 15						
7.2 NM						
2.5 NM						
2.4 NM						
CATEGORY	A	B	C	D		
LP MDA	540-1	429 (500-1)	540-1¼ 429 (500-1¼)	NA		
LNAV MDA	580-1	469 (500-1)	580-1¾ 469 (500-1¾)	NA		
CIRCLING	600-1 489 (500-1)	640-1 529 (600-1)	800-2 689 (700-2)	NA		