

HOODO SEVEN DEPARTURE (RNAV)

CLINC DEL
121.15
CTAF
123.05
HOUSTON
123.8 257

**TOP ALTITUDE:
ASSIGNED BY ATC**

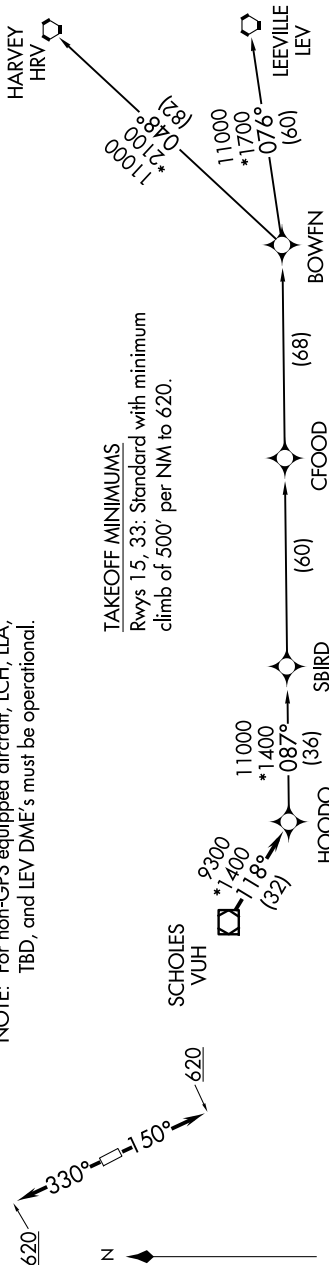
NOTE: RNAV 1.

NOTE: RADAR required.

NOTE: ATC assigned only.

NOTE: DME/DME/IRU or GPS required.

NOTE: For non-GPS equipped aircraft, LCH, LLA, TBD, and LEV DME's must be operational.



NOTE: Chart not to scale.

DEPARTURE ROUTE DESCRIPTION

TAKEOFF RUNWAY 15: Climb on heading 150° to 620, for RADAR vectors to VUH VOR/DME, thence

TAKEOFF RUNWAY 33: Climb on heading 330° to 620, for RADAR vectors to VUH VOR/DME, thence

..... on track 118° to HOODO, then on (transition). Maintain ATC assigned altitude.
Expect filed altitude 10 minutes after departure.

BOWFN TRANSITION (HOODO7.BOWFN)
CFOOD TRANSITION (HOODO7.CFOOD)
HARVEY TRANSITION (HOODO7.HRV)
LEEVILLE TRANSITION (HOODO7.LEV)
SBIRD TRANSITION (HOODO7.SBIRD)

SC-5, 07 AUG 2025 to 04 SEP 2025

HOODO SEVEN DEPARTURE (RNAV)

(HOODO7.HOODO) 07OCT21

HOUSTON, TEXAS

WEST HOUSTON (IWS)