

SC-5, 07 AUG 2025 to 04 SEP 2025

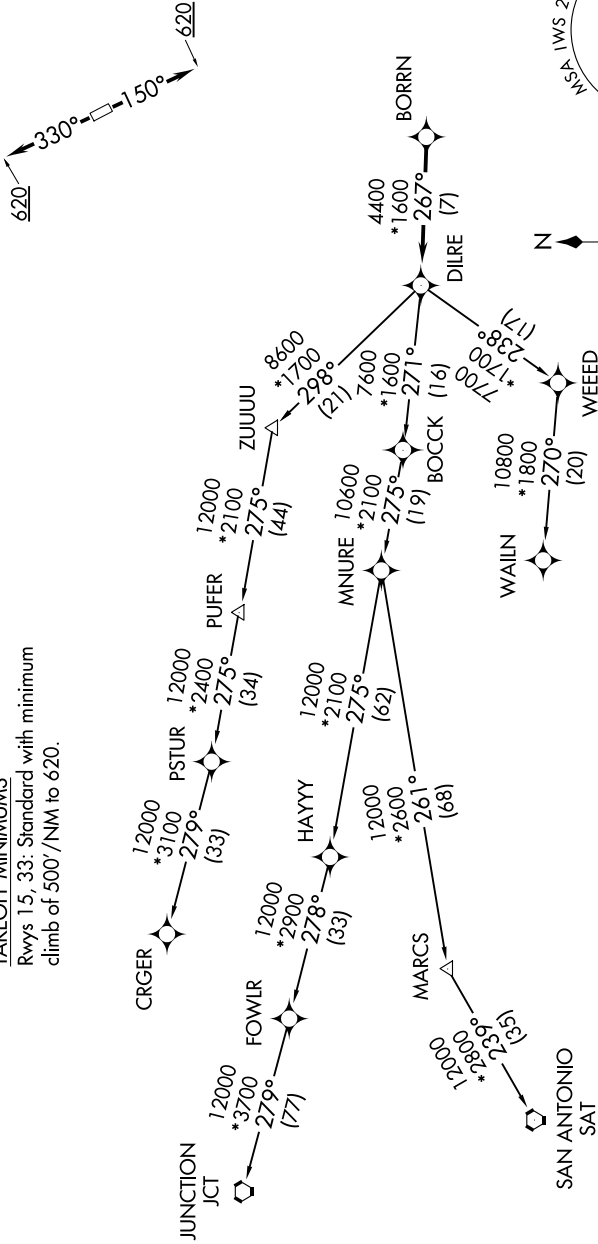
CTAF  
123.05  
CLNC DEL  
121.15  
HOUSTON DEP CON  
123.8 257.7

RNAV 1 - DME/DME/IRU or GPS.

RADAR required.

TOP ALTITUDE:  
ASSIGNED BY ATC

TAKEOFF MINIMUMS  
Rwys 15, 33: Standard with minimum  
climb of 500'/NM to 620.



(CONTINUED ON FOLLOWING PAGE)

NOTE: Chart not to scale.

SC-5, 07 AUG 2025 to 04 SEP 2025