

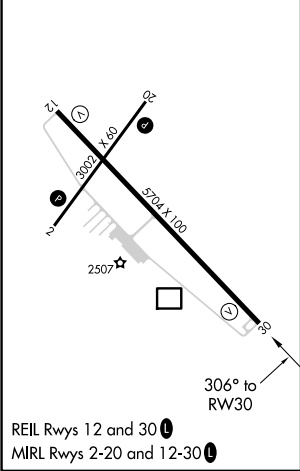
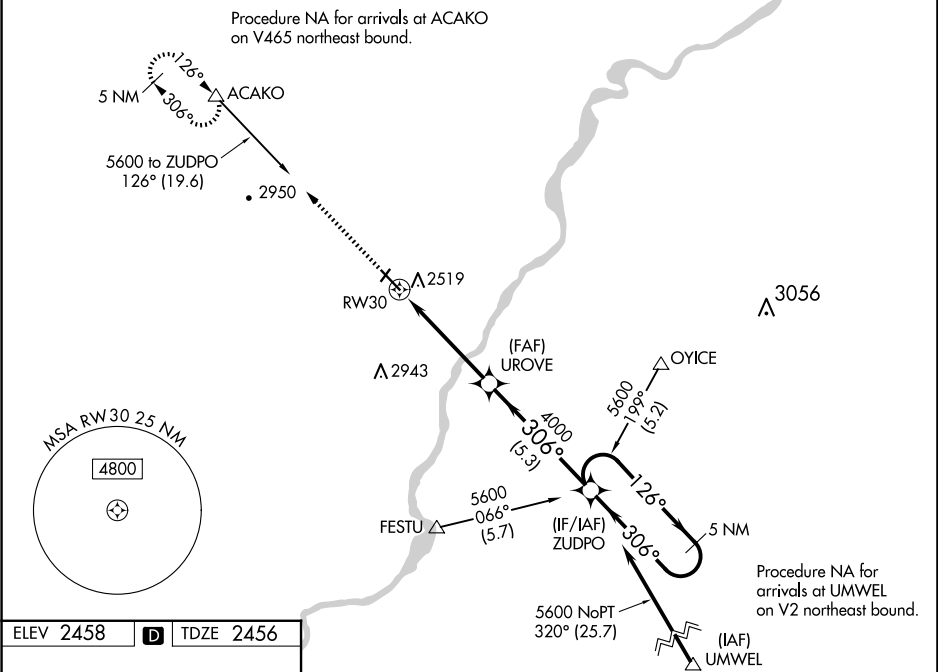
WAAS CH 86623 W30A	APP CRS 306°	Rwy Idg TDZE 2456 Apt Elev 2458
--	------------------------	---

RNAV (GPS) RWY 30

DAWSON COMMUNITY (GDV)

RNP APCH. ▼ For uncompensated Baro-VNAV systems, LNAV/VNAV NA below -19°C or above 28°C. When local altimeter setting not received, procedure NA. Rwy 30 helicopter visibility reduction below ¾ SM NA. ▲	MISSED APPROACH: Climb to 6000 direct ACAKO and hold, continue climb-in-hold to 6000.
---	---

AWOS-3PT 135.075	SALT LAKE CENTER 126.85 305.2	UNICOM 122.8 (CTAF) 1
----------------------------	---	---------------------------------



6000	ACAKO	VGSI and RNAV glidepath not coincident (VGSI Angle 3.00/TCH 37).			
↑	△	5 NM Holding Pattern			
UROVE		ZUDPO			
4000		5600			
RW30		GP 3.00° TCH 52			
4000					
4.7 NM		5.3 NM			
CATEGORY	A	B	C	D	
LPV DA	2706-1 250 (300-1)				
LNAV/VNAV DA	2706-1 250 (300-1)				
LNAV MDA	2780-1 324 (400-1)				
CIRCLING	2840-1 382 (400-1)	2920-1 462 (500-1)	3280-2½ 822 (900-2½)	3280-2¾ 822 (900-2¾)	